

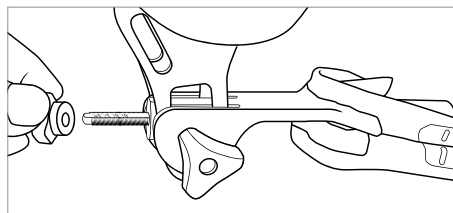
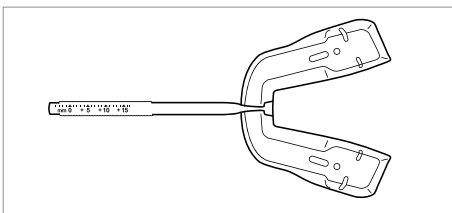
TAP® PAP

Comfortable nasal pillow mask designed for patients with low CPAP compliance. Since the TAP® PAP mask is anchored to the upper teeth with a special ThermAcryl™ mouthpiece, it is very stable, will not move or leak nor leave annoying marks on nose and face.

- // metal-free
- // optimal fit thanks to soft nasal pillow masks in 3 sizes
- // ThermAcryl™ mouthpiece for individual adjustment
- // no head gears

TAP® PAP Lower Tray is optionally available for use in combined therapy.

Lower jaw splint matching the TAP® PAP for use in combined therapy. The mask pressure can be lowered by protrusion of the lower jaw.



Lower jaw splint incl. screw, AM Aligner and instructions.

Delivery program

// TAP® PAP	#9073
// TAP® PAP Lower Tray	#9074

