

CA[®] CLEAR ALIGNER Pliers

Hints for use

CA[®] TIP 1 / TIP 2 / TIP 3 / TIP 4 / TIP 5 / TIP 6

Heating the Aligner Pliers is not required!

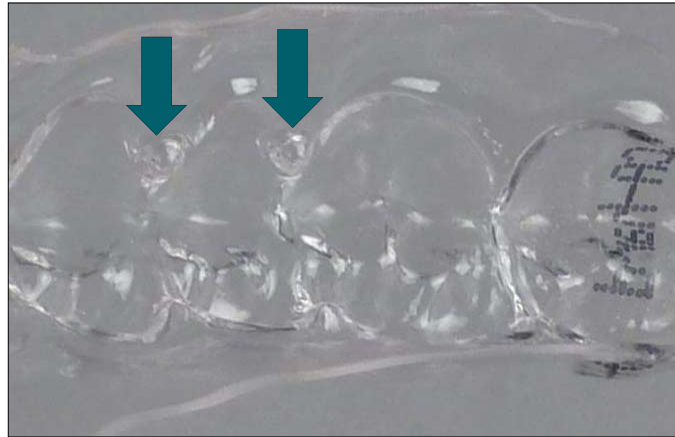


Forming Retention Points

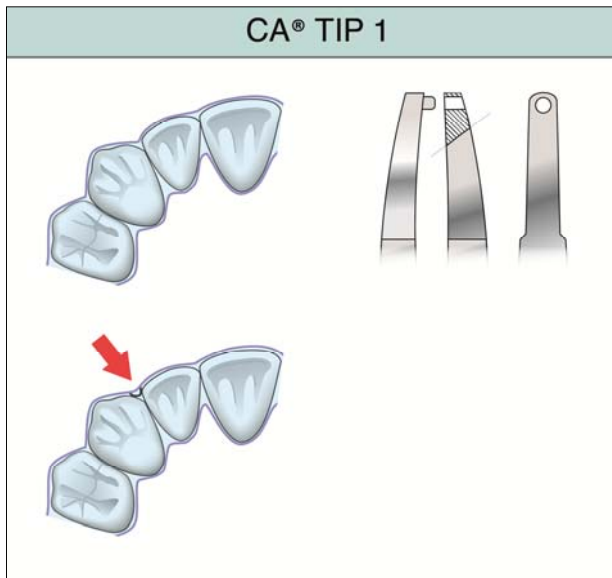
Retention points are set interdentally in the region of the gingival margin.



Controlling the interdental retention points (depth 1.5 mm)



CA® TIP 1



Picture credit:
Dr. Pablo Echarri

CA[®] TIP 2 REF 5291



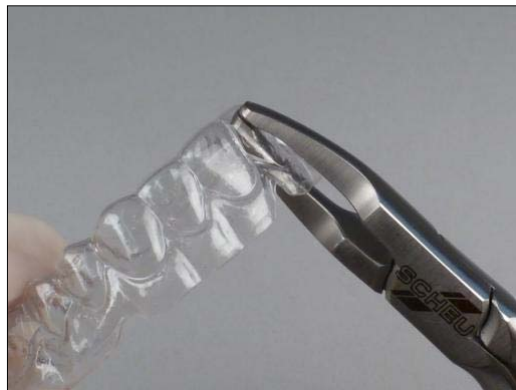
Forming Activation Points



www.ca-clear-aligner.com



Activation points are set to support tooth/root movements and to control the axis/rotation.

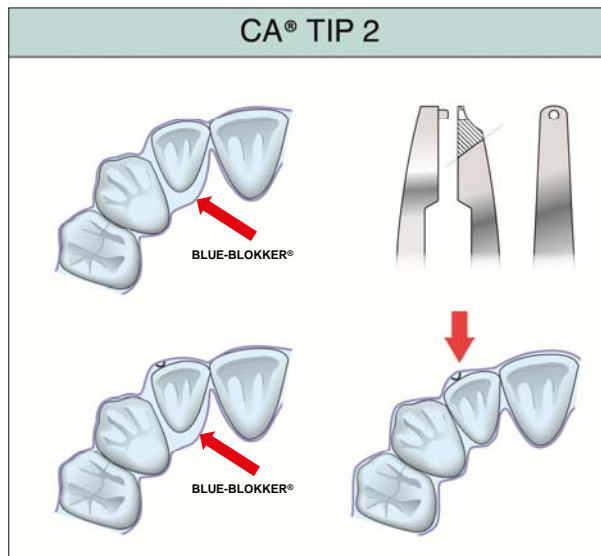


www.ca-clear-aligner.com

Depth of Activation Points 1.2 mm



CA® TIP 2



Picture Credit:
Dr. Pablo Echarri

CA® TIP 3 REF 5292



Labial/lingual Crown Inclination



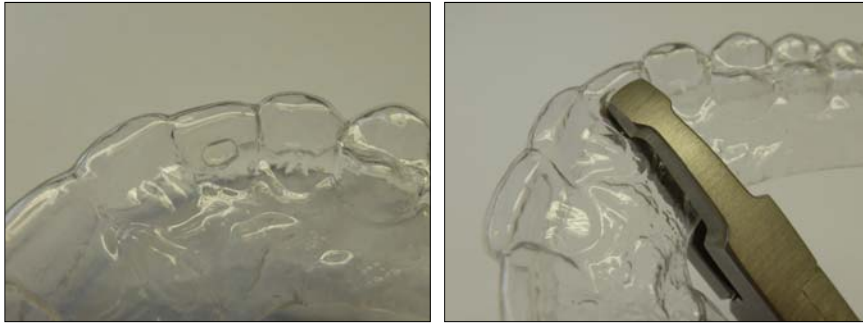
www.ca-clear-aligner.com

CA® Pliers with Oval Plateau

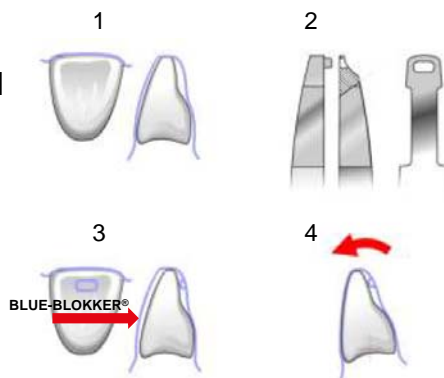


www.ca-clear-aligner.com

Enables Inserting Activation Surfaces in CA® Splints



- Activation is done from the lingual (or labial) side in the vicinity of the incisal edge.
- Sufficient space for this movement has to be created.
- We recommend using BLUE-BLOKKER®



Picture Credit: Dr. Pablo Echarri

CA® TIP 4 REF 5295



Root Torque Activation



www.ca-clear-aligner.com

CA® Pliers for Torque Control with Curved Plateau

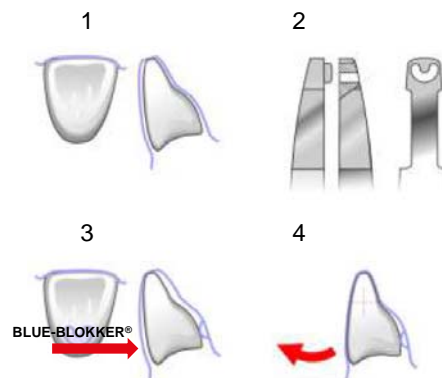


www.ca-clear-aligner.com

Forming Activation Surfaces in CA® Splints in the Labial/Lingual Region



- The activation is done in the cervical area from the lingual (or labial) side.
- Make sure to create sufficient space for the movement prior to thermoforming using BLUE-BLOKKER® .
- The function is similar to the one of CA® POWER GRIP moulds 4 and 5.



Picture Credit: Dr. Pablo Echarri

CA® TIP 5 REF 5299



Available
in 3rd
quarter
2019

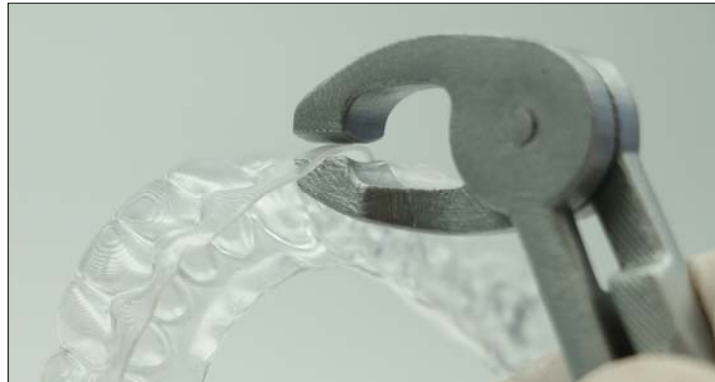


www.ca-clear-aligner.com

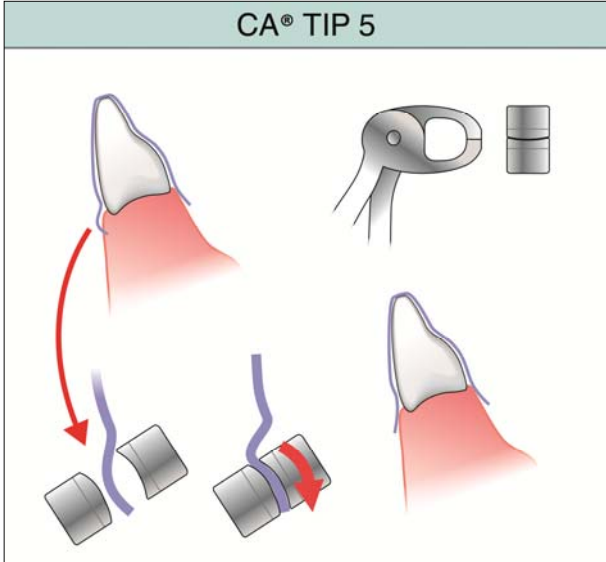


www.ca-clear-aligner.com

Pliers for aligners with angled pliers head for correction of splint edges
in case of gingival pressure marks



CA[®] TIP 5



Picture Credit:
Dr. Pablo Echarri

www.ca-clear-aligner.com

CA[®] TIP 6 REF 5323



Available
in 3rd
quarter
2019

www.ca-clear-aligner.com



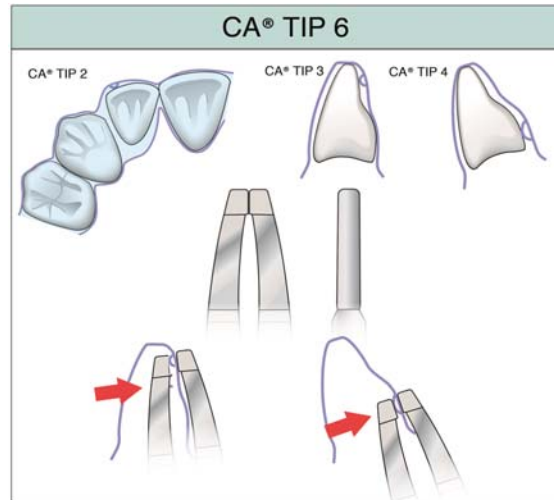
Pliers for aligners for correction and removal of activation points inserted by means of CA® TIP 2.





Pliers for aligners for removal of activation surfaces inserted by means of CA® TIP 3 & CA® TIP 4 pliers. Also suitable for finishing and smoothing of the splint surface.





Picture Credit:
Dr. Pablo Echarri

The pliers for aligners are made from stainless steel. We recommend thermal disinfection (gentle program not exceeding 121°C) or spray disinfection.

Overview CA® Pliers



REF	Designation
5281.1	CA® TIP 1
5291.1	CA® TIP 2
5292.1	CA® TIP 3
5295.1	CA® TIP 4
5299.1*	CA® TIP 5
5323.1*	CA® TIP 6

* available in 3rd quarter 2019



www.ca-clear-aligner.com

5 years guarantee*

- // on material
- // on workmanship
- // on breakage and corrosion

* CA® TIP 1-6

SCHEU-DENTAL GmbH
www.scheu-dental.com

Am Burgberg 20
58642 Iserlohn · Germany



DE/GB 250/01/19 G. REF PM0228.01



www.ca-clear-aligner.com