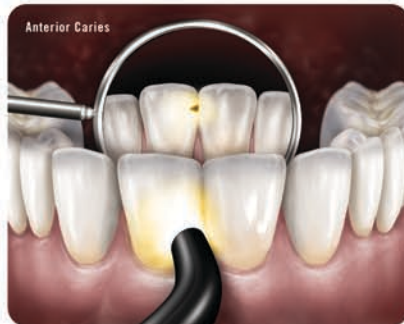


## MICROLUX DIAGNOSTIC SYSTEM

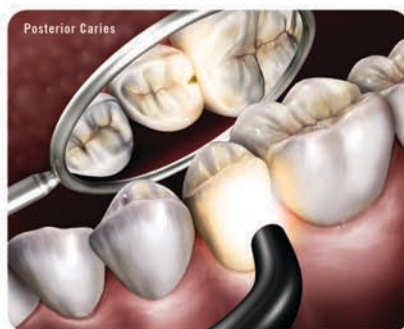


### Anterior Caries

To visualize anterior proximal caries place the probe on the labio-cervical region of the tooth and examine the surface from the lingual with a mouth mirror.

**Pictured at left: Anterior Caries with 2 & 3 mm tips**

2mm - P/N 600045; 3mm - P/N 630003

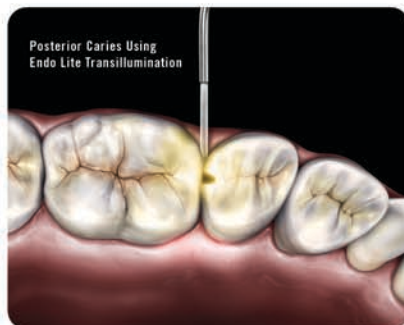


### Posterior Caries

To visualize posterior proximal decay, place probe on the cervical area of the tooth, buccally or lingually. Light passes into the cervical tooth structure and then radiates occlusally. Caries appear as a dark shadow on the occlusal surface.

**Pictured at left: Posterior Caries with 2 & 3 mm tips**

2mm - P/N 600045; 3mm - P/N 630003



### Posterior Caries with Endo Lite

Posterior caries can be also detected using the Endo Lite fiber tip. Place the lighted fiber tip interproximally under the marginal ridge. View from the occlusal. This method often shows caries with high definition.

**Pictured at left: Posterior Caries with Endo Lite**

Endo Lite - P/N 640035



### Subgingival Calculus

Sub-gingival calculus can be detected by placing the light source either buccally or lingually in the gingival region. Calculus will appear dark in contrast to the translucent enamel and dentin above and below the gingiva in the cervical region.

**Pictured at left: Subgingival Calculus with 2 & 3 mm tips**

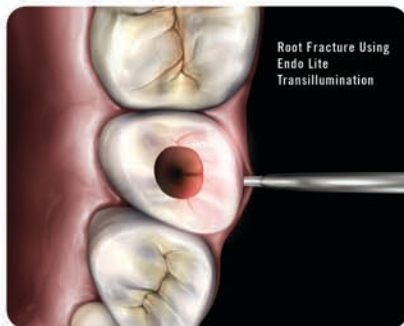
2mm - P/N 600045; 3mm - P/N 630003



### Root Canal Orifice

To locate the orifices of a root canal, place the light source on the buccal or lingual cervical region of the tooth. The canal orifice shows up as a dark circle.

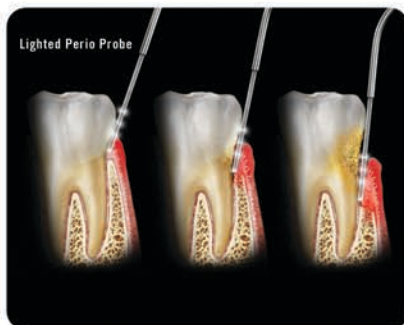
**Pictured at left: Root Canal Orifice with 2 & 3 mm tips**  
2mm - P/N 600045; 3mm - P/N 630003



### Root Fracture

To detect a root fracture, use the Endo Lite fiber tip and place it either buccally or lingually in the gingival sulcus. A fracture line will appear dark via transillumination from the outside to the inside of the canal.

**Pictured at left: Root Fracture with Endo Lite**  
Endo Lite - P/N 640035



### Lighted Perio Probe

To detect the depth of pockets and gingival recession, use the Perio probe and insert the tip in the gingival sulcus. The depth indications on the illuminated fiber tip are 3mm, 5mm and 7mm.

**Pictured at left: Lighted Perio Probe with Perio Probe**  
Perio Probe - P/N 640041



### Oral Cancer Screening

For oral cancer screening, have the patient rinse with 1% acetic acid, lower the room light, and place the Microlux DL tip in the mouth. Any acetowhite or leukoplakic lesions become more visible.

**Pictured at left: Oral Cancer Screening with DL Light guide**  
DL Light guide (Oral Cancer) - P/N 600053



### Microlux DL Kit for Oral Cancer Screening

Kit includes the Microlux lighted hand piece, DL light guide & 6 bottles of 1% acetic acid.

P/N 110035

Acetic acid can be ordered in 6, 12 or 24 bottle packages. P/N 110030, 110032, 110033