



P/N 140001

Rite-lite PRO™

MULTISPECTRAL/HI CRI SHADE LIGHT

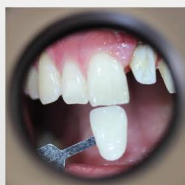
RITE-LITE PRO: PERFECTING SHADE SELECTION

- Tri-Spectra HI CRI LEDs (5500°k, 3200°k, 3900°k)
- Three intensity levels for better visualization
- Blacklight setting for matching composite & porcelain to natural dentition fluorescence
- Larger viewing area
- Rechargeable Li-Ion battery
- Available Polarizing Filter eliminates reflection

Rite-Lite PRO offers three different light spectra to simulate varying lighting conditions:
(Photos courtesy of Lorin F. Berland, DDS)

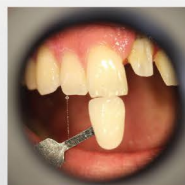
DAYLIGHT - for initial shade taking.

Daylight that is seen in an outdoor environment on a cloudy bright day is an industry standard color temperature of 5500°Kelvin.



ROOM LIGHT - for verification of shade taking.

Warm, incandescent light that is found in many indoor environments. Approximately 3200°Kelvin.



AMBIENT LIGHT - for verification of shade taking.

Mixed lighting conditions of daylight and room light that exist in many indoor environments. Approximately 3900°Kelvin.



RESTORATION VIEWED WITH BLACK LIGHT:

Research shows that natural teeth fluoresce at wavelengths below 400 nm, i.e.- black light. Wavelengths below 400 nm are part of the spectrum of various indoor and outdoor lighting environments. Therefore, if we are to get a perfect shade match for porcelain or composite materials, they should fluoresce in the same manner as natural teeth. The cell phone photos show the effect of this mismatch when viewed with the Rite-Lite PRO.



Clinical



Black Light

“Great product. I have used it to verify my own shade selections. **Every single shade selection I chose was verified correct** by Rite-Lite 2.”

- Steven Balloch, DDS, Glastonbury, CT

“**We love this light.** We haven’t been off on one shade since we started using this light.”

- Dennis Lempke, Lempke Dental Laboratories, Maplewood, MN