

DENTAL PROGRAMME 2023 · 2024



WELCOME TO THE DENTALISTS!

Dear customers and business partners,

As a researching dental company our focus is first and foremost on you and your expectations in respect of our products. No matter if they are put to use in the dental surgery or in the laboratory – what counts are ease of working, reliability, individuality and, of course, top quality.

These features characterise our entire product portfolio, which includes high-quality materials for a large range of indications: from products for prophylaxis via a wide range of composites and bondings to luting materials or materials for the fabrication of temporaries and impression taking.

In addition, VOCO carries over their expertise in the light-curing resins area to the digital dentistry: whether with ultramodern 3D printers, the worldwide successful printing materials of the V-Print family or innovative composite blocs for CAD/CAM applications. VOCO develops products, which meet the highest demands of dentists and dental technicians. For the first time it is possible to fabricate complete prosthesis with our CediTEC and V-Print dentbase in just one set – from the base via the prosthetic teeth to the luting material (more about this from page 49).

Read on to find out more about our diverse portfolio for preventive, restorative, prosthetic and digital dentistry. Acquaint yourself with our products in the following areas

- **Oral Care**
- **Direct restoration**
- **Indirect restoration** and
- **Devices · Various**

and discover VOCO's top quality standards.

If you have any questions or require further information, please feel free to contact your VOCO dental consultant. Of course, our Customer Service department will also be pleased to help (contact them by e-mail to service@voco.de or by Freecall on 00 800 44 444 555).

Product information, instructions for use, scientific information, clinical cases and more are available for you on www.voco.dental.

News, information and other VOCO fans can be found on Facebook, Instagram and Youtube!

Your VOCO GmbH



www.voco.dental

ORAL CARE

Professional cleaning

CleanJoy 7

Fissure sealing

Grandio Seal 8

Fissurit FX 9

Fissurit F 9

Prophylaxis

Bifluorid 10 10

Remin Pro 11

Prophylaxis Set 11

Desensitiser

VOCO Profluorid Varnish 12

Admira Protect 13

Whitening

Perfect Bleach 14

Perfect Bleach Office+ 14

DIRECT RESTAURATION

Liner

Calcimol LC 16

Calcicur 16

Ionoseal 17

Bonding

Futurabond U 19

Futurabond M+ 20

Futurabond DC 21

Vococid 21

Admira Bond 22

Solobond M 22

Restoratives (ORMOCER®s)

Admira Fusion 5 **NEW** 24

Admira Fusion 25

Admira Fusion Flow 26

Admira Fusion x-tra 27

Admira Fusion x-base 28

Restoratives (Composites)

GrandioSO 29

GrandioSO Light Flow 30

GrandioSO Flow 30

GrandioSO Heavy Flow 31

GrandioSO x-tra 32

GrandTEC 32

VisCalor bulk 33

Grandio 34

Grandio Flow 35

Amaris 36

Amaris Flow 36

Amaris Gingiva 37

FinalTouch 37

x-tra base 38

x-tra fil 39

Alfacomp LC 40

AlignerFlow LC **NEW** 40

Polofil Supra 41

Restoratives (Compomers)

Twinky Star 41

Twinky Star Flow 41

Restoratives (Glass ionomer materials)

Ionolux 43

IonoStar Plus 44

IonoStar Molar 45

VOCO Ionofil Molar AC Quick 46

VOCO Ionofil Molar 46

Aqua Ionofil Plus 47

Easy Glaze 47

INDIRECT RESTAURATIONS

CAD / CAM material

V-Print splint 49

V-Print splint comfort 49

V-Print SG 50

V-Print model fast 50

V-Print model 2.0 50

V-Print Try-In 51

V-Print tray 51

V-Print cast 51

V-Print c&b temp **NEW** 52

V-Print dentbase 52

Structur CAD 53

Grandio blocs 54

Grandio disc 55

CediTEC DT 56

CediTEC 56

CediTEC DB 57

Luting

Bifix SE 59

Bifix QM 60

Bifix Hybrid Abutment 60

Ceramic Bond 61

Meron Plus QM 61

Meron (Application capsule) 62

Meron 62

Aqua Meron 62

Quick Up 63

BrackFix 63

Core build-up

Rebilda Post 64

Rebilda Post GT 65

Rebilda DC 66

Grandio Core Dual Cure 67

Temporaries

Structur 3 68

Structur 2 69

Structur Premium 70

Temporary Set 70

Provicol QM Aesthetic 71

Provicol QM Plus 71

Provicol · Provicol QM 72

Provicol C 72

Bifix Temp 72

Clip · Clip F 73

Clip Flow 73

Denture relining

Ufi Gel hard C · Ufi Gel hard 74

Ufi Gel SC · Ufi Gel P 75

Impression

V-Posil Putty Fast 76

V-Posil Putty Soft Fast 76

V-Posil Heavy Soft Fast 76

V-Posil Mono Fast 76

V-Posil Light Fast 77

V-Posil X-Light Fast 77

Registrado X-tra 78

Fit Test C & B 78

VOCO Retraction Paste 79

Individuo Lux 80

Profibase 80

LC Dam 81

Repair

Cimara 81

DEVICES · VARIOUS

Devices

VisCalor Dispenser 83

Caps Warmer 83

Celalux 3 84

VOCO GIC Mixer 85

VOCO Dynamic Dispenser 85

Others

Caries Marker 86

Block Out Gel LC 86

Pele Tim 86

Cleaning

Traypurol 87

Traypurol tabs 87

Small devices

Caps Dispenser 88

Dispenser 88

QuickMix Dispenser 88

AC Applicator 88

AC Activator 88

Application brush dispenser 88

Disposable articles

Disposable articles 89

ICONS

The following icons enable you to quickly find the right product and make a first assessment and judgement within seconds, which allows you to quickly gain a general overview.

	<p>Material composition Both the fillers and the resin matrix of this product are based purely on silicon oxide.</p>		<p>Method of application No separate etching of the tooth surface is required before the adhesive system (bond) is used. For detailed information, please consult the instructions for use.</p>
	<p>Material composition This product is based on nano-hybrid technology.</p>		<p>Method of application Separate etching of the tooth surface is necessary before the adhesive system (bond) is used. For detailed information, please consult the instructions for use.</p>
	<p>Application of the material This material is available in the non-running, non-dripping NDT®-syringe.</p>		<p>Method of application Preparatory conditioning of the tooth surface is not required before application of this material to the tooth. For detailed information, please consult the instructions for use.</p>
	<p>Indications According to indications, this product is suitable for fillings of the classes of cavity listed. For detailed information, please consult the instructions for use.</p>		<p>Application of the material When heated, the viscosity of this material changes, thus uniting the respective advantages of flowable and sculptable materials. Specifically designed to be heated for use.</p>
	<p>Radiopacity After completion of the working process, this material is highly radiopaque. The value shown indicates the radiopacity in percent relating to the aluminium equivalent.</p>		<p>Filler content This product has a defined filler content, which is indicated in percent by weight.</p>
	<p>Fluoride content This product contains the level of fluorides indicated. For detailed information, please consult the instructions for use.</p>		<p>Hardness of the material This product possesses the shore A hardness shown.</p>
	<p>Indication of working time The maximum extraoral working time for this product is as shown.</p>		<p>Material compatibility This product can be used with the materials indicated. For detailed information, please consult the instructions for use.</p>
	<p>Indication of retention time in the mouth This product is retained in the mouth for the minimum duration shown.</p>		<p>CAD / CAM This product is suitable for use in digital dentistry. For detailed information, please consult the instructions for use.</p>
	<p>Working directions This material is suitable for so-called bulk fillings with a maximum layer thickness of 4 mm. For detailed information, please consult the instructions for use.</p>		<p>Wavelength information This device operates at the specified wavelength.</p>
	<p>Curing of the material This product cures through exposure to light. The time indicated represents the average time. For detailed information, please consult the instructions for use.</p>		<p>Format of communication data This product processes the data format indicated.</p>
	<p>Curing of the material This product either cures through exposure to light or it self-cures chemically. For detailed information, please consult the instructions for use.</p>		<p>Non-sedimenting This product is non-sedimenting. The product enables additive manufacturing of objects from homogeneous solution throughout the entire printing process.</p>
	<p>Curing of the material This product self-cures chemically. For detailed information, please consult the instructions for use.</p>		<p>Flowable Injection Technique This product is suitable for the Flowable Injection Technique. The material is applied through a transparent silicone key.</p>
	<p>Volume shrinkage During setting, this product is subject to the volume shrinkage indicated in percent.</p>		

Oral Care

Protection. Care. Conservation.

Healthy teeth are a valuable asset, and to keep them healthy for a long time you and your patients work together with us towards a common goal. For this to succeed, VOCO products make an important contribution. With fluoride varnishes suitable for a great variety of indications. With fissure sealants offering high filler content even in conjunction with transparency. With immediately effective desensitisers. With cleaning pastes in various grades. No matter which product you choose, you will always make the right decision. For whitening, we further offer a complete series, which is as convincing in its use as it is in its result – both at the dental office and at home.



Oral Care

DEVICES · VARIOUS

Cleaning						
Page		contains fluoride	RDA values	flavour	presentation	special characteristics
7	CleanJoy	700 ppm	coarse (195), medium (127), fine (16)	Mint, cherry, caramel	tube	xylitol, "traffic light coding"
Fissure sealing						
Page		% w/w	opaque			
8	Grandio Seal	70 % w/w	•			
9	Fissurit FX	55 % w/w	•			
9	Fissurit F	n/s	•			

Fluoridation · Desensitisation						
Page		fluoridation	desensitisation	fluoride content	presentation	flavour
10	Bifluorid 10	•	•	22.600 ppm	SingleDose, bottle	clinical
11	Remin Pro	•	•	1.450 ppm	tube	mint, melon, strawberry
12	VOCO Profluorid Varnish	•	•	22.600 ppm	SingleDose, tube, cartridge	mint, melon, caramel, cherry, bubble gum, cola lime, pina colada
13	Admira Protect		•	•	bottle	clinical

Whitening						
Page		carbamide peroxide	hydrogen peroxide	home	office	
14	Perfect Bleach	10 % / 16 %	equiv. to 3,5 % / 6%	•	•	
14	Perfect Bleach Office+		35 %		•	

ORAL CARE

DIRECT RESTORATION

INDIRECT RESTORATION

CleanJoy®

Fluoride-containing tooth cleaning and polishing paste in three cleaning grades



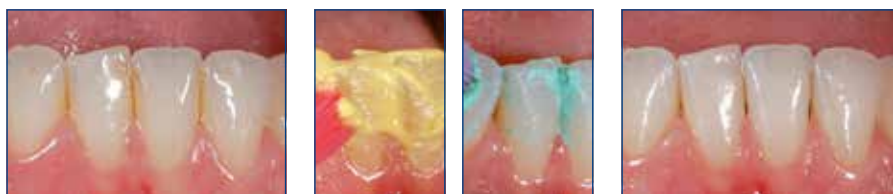
Indications

- Removal of soft and hard surface plaque
- Removal of extrinsic discolouration (e.g. staining from coffee, tea or tobacco)
- Polishing of tooth surfaces as part of professional tooth cleaning, prior to whitening or following the removal of orthodontic devices
- Cleaning and polishing of restorations as part of professional tooth cleaning
- Removal of residues of temporary luting material prior to definitive bonding (cementation)

Advantages

- Stable, homogenous consistency
- No splashing (2,000 - 3,000 r / min)
- No parabens
- Available in three abrasion grades, thus can be individually adjusted to each situation
- RDA values (measured in accordance with DIN EN ISO 11609)
 - coarse (red) RDA = 195
 - medium (yellow) RDA = 127
 - fine (green) RDA = 16
- Traffic light coding: simple to use without confusion
- Can be used with any conventional instrument (small brush, cup etc.)
- Contains fluoride (700 ppm) and xylitol
- Three pleasant flavours: mint, caramel, cherry

Application



Slight extrinsic staining in the anterior region of the mandible

Use of the yellow cleaning paste and finishing with the green polishing paste

Clean and smooth tooth surfaces

Source: Dr. Sanzio Marques, Passos / Brazil



Coarse (red)	
Flavour	Tube 100 g
Mint	REF 2092
Caramel	REF 6092
Cherry	REF 6100
Medium (yellow)	
Flavour	Tube 100 g
Mint	REF 2091
Caramel	REF 6091
Cherry	REF 6099
Fine (green)	
Flavour	Tube 100 g
Mint	REF 2090
Caramel	REF 6090
Cherry	REF 6098
REF 2089	Tube 4 x 100 g fine (green), mint

Professional cleaning

Fissure sealing

Prophylaxis

Desensitiser

Whitening

Grandio® Seal

Light-curing nano-hybrid fissure sealant



Indications

- Sealing / filling of pits and fissures
- Sealing / facing of damaged enamel surfaces
- Covering of caries predilection sites during orthodontic treatments
- Sealing of deciduous teeth

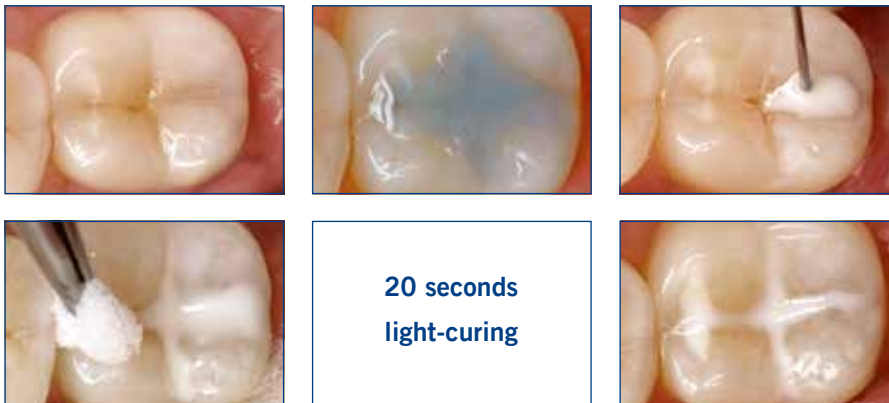
Advantages

- Use of nano-fillers for optimal flow behaviour
- With 70 % w/w highest filler content in its class
- Outstanding physical properties
 - low abrasion
 - high transverse strength
 - extremely low shrinkage values
- Excellent handling
- Optimal wetting
- Perfect marginal adaptation
- Ideal for sealing composite or glass ionomer fillings (protective layer against humidity)

Grandio® Seal in the NDT®-syringe

- NDT® means non-dripping-technology
- Especially suited for fine-flowing materials
- Can be dosed and applied with precision
- Without any loss of material

Clinical Case



Source: Dr. Marcelo Balsamo, São Paulo / Brazil

REF 1060	Set syringe 5 × 2 g, Vococid gel syringe 5 ml, accessories
REF 1061	Syringe 2 × 2 g, accessories
REF 2147	Application cannulae type 45, 100 pcs.

Professional cleaning

Fissure sealing

Prophylaxis

Desensitiser

Whitening

Fissurit® FX

Highly filled light-curing fissure sealant with fluoride, white

Indications

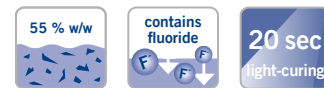
Sealing of fissures and occlusal surfaces for caries prophylaxis

Sealing of extended fissures

Filling of small cavities

Advantages

- Filler content of 55 % w/w for outstanding abrasion proofness
- Quick and easy application from the direct-application syringe with bendable metal cannulae
- Optimal flow properties
- High stability and good adhesion to enamel
- Perfect marginal adaptation
- Continuous fluoride release
- White for easy visual control



REF 1181 Syringe 2 × 2.5 g, accessories
REF 2145 Application cannulae type 40, 100 pcs.

Not available in Canada

Fissurit® F

Light-curing fissure sealant with fluoride, white

Indications

Sealing of pits, fissures and occlusal surfaces for caries prophylaxis

Facing of damaged enamel surfaces

Anchoring of orthodontic appliances

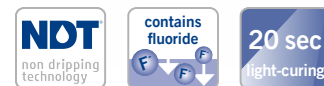
Sealing of composite and cement fillings (protection against moisture)

Restoration of small carious lesions

Repair of small defects in composite and amalgam fillings

Advantages

- Quick and direct application from the non-dripping NDT®-syringe
- White for application control
- Excellent flow properties and low viscosity
- High stability and good adhesion to enamel
- Perfect marginal adaptation
- Continuous fluoride release



REF 1180 Bottle 2 × 3 ml
REF 1292 Syringe 2 × 2 g, accessories
REF 1293 Set syringe 5 × 2 g, Vococid gel syringe 5 ml, Vococid bottle 2 × 3 ml, accessories
REF 2145 Application cannulae type 40, 100 pcs.

Not available in Canada

Professional cleaning

Fissure sealing

Prophylaxis

Desensitiser

Whitening

Bifluorid 10®

Fluoride varnish for the treatment of dental hypersensitivity



Indications

Treatment of hypersensitivity, including

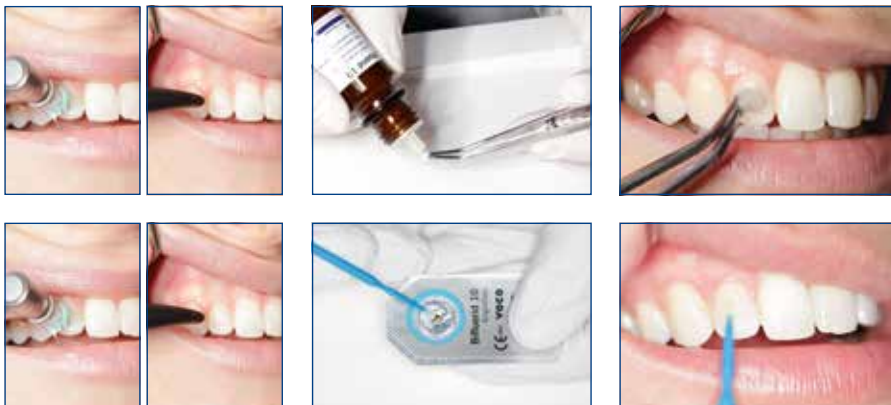
- cervical area and crown margins
- sensitivity after professional cleaning and calculus removal
- tooth surfaces after preparation and / or grinding
- worn occlusal surfaces and teeth carrying clasps
- after injury of the enamel (e.g. fractures, chips)
- sealing cavity margins after restoration, especially after the etching technique has been employed
- as a dentine protection / lining under amalgam fillings

Advantages

- Immediately desensitising
- Formation of a protective coat against thermal and mechanical influences
- Transparent – no discolouration of teeth
- Special varnish base reinforces long-term effect and deep fluoridation
- Economical and simple – high yield, low cost, fast application
- Dries quickly
- Colophony-free
- Contains 5 % sodium fluoride (equal to 22,600 ppm fluoride) and 5 % calcium fluoride
- Bleaching compatible, reduction of sensitivity, without hindering the bleaching treatment

REF 1615	Bottle 4 g, Solvent bottle 10 ml
REF 1616	Bottle 10 g
REF 1617	Bottle 3 x 10 g, Solvent bottle 10 ml, Pele Tim No. 1
REF 1618	SingleDose 50 pcs., accessories
REF 1619	SingleDose 200 pcs., accessories
REF 1032	Solvent bottle 10 ml
REF 2247	Single Tim, application brushes, 100 pcs.
REF 2252	Pele Tim, No. 1, 3.000 x ø 4 mm

Application



Remin Pro®

Protective dental care with fluoride and hydroxy apatite



Indications

- After tooth whitening
- After professional tooth cleaning
- For the prevention and control of hypersensitivities
- During orthodontic treatment

Advantages

- Contains fluoride (1,450 ppm), hydroxy apatite and xylitol
- Provides a balanced oral flora and thus protects the teeth against harmful acid attacks
- Strengthens the teeth after whitening and professional cleaning
- Available in three aromatic flavours (melon, mint and strawberry)
- Can be used daily and especially well-suited for use at home
- Optimal for cases of MIH



REF 2003	Tube 12 × 40 g melon
REF 2004	Tube 12 × 40 g mint
REF 2005	Tube 12 × 40 g strawberry
REF 2006	Tube 12 × 40 g mixed
REF 2007	Tube 3 × 40 g mixed

Not available in Canada

Prophylaxis Set

All-in-one – Professional prophylaxis products from VOCO in only one single set



Indications

More information on the indications can be found on the product pages of CleanJoy, Remin Pro, VOCO Profluorid Varnish and Grandio Seal

Advantages

- Fluoridate, Protect, Care, Seal
- Also for individual prophylaxis
- Different flavours for testing
- For your daily and special practice

REF 2996	Set CleanJoy tube 2 × 100 g, Remin Pro tube 40 g, Profluorid Varnish <i>SingleDose</i> 12 × 0.4 ml, Grandio Seal syringe 2 × 2 g
----------	--

Product presentations may vary
Not available in Canada

Professional cleaning

Fissure sealing

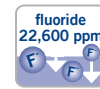
Prophylaxis

Desensitiser

Whitening

VOCO Profluorid® Varnish

Fluoride-containing dental desensitising varnish (5 % NaF)



Indications

- Treatment of hypersensitive teeth
- Treatment of sensitive root surfaces

Advantages

- Moisture tolerant
- Esthetic, tooth-shaded varnish
- Fast desensitisation and fluoride release (5 % NaF \triangleq 22,600 ppm fluoride)
- In seven pleasant flavours available: melon, mint, cherry, caramel, bubble gum, cola lime and pina colada
- Ideal for treating cervical areas after professional cleaning and calculus removal
- Optimal for cases of MIH

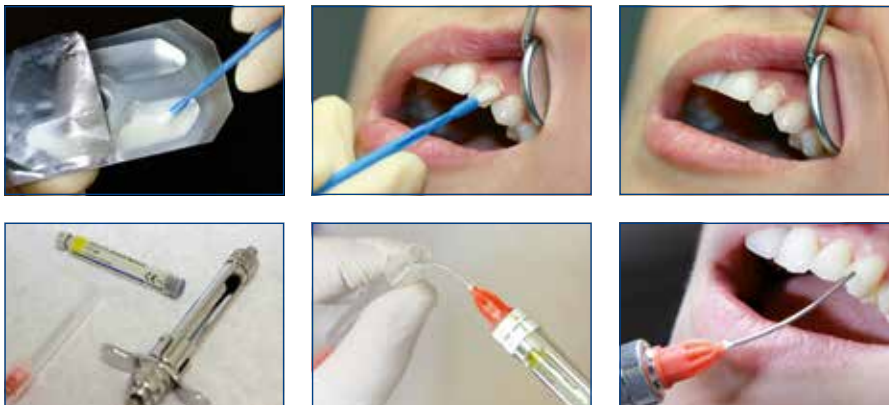
Advantages of the SingleDose

- Easy, quick and hygienic
- No additional devices required
- No spilling in any position

Advantages of the cartridge

- Multiple use with disposable cannulae
- Perfectly precise application
- Extremely easy application in proximal areas
- Complete fluoride application in only a single step

Application



SingleDose		
Flavour	50 x 0.40 ml	200 x 0.40 ml
Melon	REF 1269	REF 1271
Caramel	REF 2226	REF 2229
Cherry	REF 2227	REF 2230
Mint	REF 2228	REF 2231
Bubble Gum	REF 2238	REF 2239
Cola Lime	REF 2240	REF 2241
Pina Colada	REF 2242	REF 2243
Flavour	48 x 0.40 ml	50 x 0.25 ml
Melon	–	REF 1268
Mixed	REF 2225	–
Cartridge		
Flavour	5 x 1.70 ml	
Melon	REF 2235	
REF 2167	Application cannulae type 43, 100 pcs.	

REF 1272 and 2235 are not available in Canada

Professional cleaning

Fissure sealing

Prophylaxis

Desensitiser

Whitening

VOCO Profluorid® Varnish

Fluoride-containing dental desensitising varnish (5 % NaF)



Indications

Treatment of hypersensitive teeth
 Treatment of sensitive root surfaces

Advantages

- Moisture tolerant
- Esthetic, tooth-shaded varnish
- Economical application in thin layers, high yield
- Ideal for treating cervical areas after professional cleaning and calculus removal
- Optimal for cases of MIH

Tube	10 ml	50 ml
Flavour		
Melon	REF 1267	REF 1272
Caramel	REF 2232	–
Cherry	REF 2233	–
Mint	REF 2234	–
Cola Lime	REF 2236	–
Pina Colada	REF 2237	–
Flavour	4 x 10 ml	
Mixed	REF 2971	

Admira® Protect

Light-curing ORMOCER® based protective desensitiser



Indications

Treatment of hypersensitive dentine
 Treatment of cervical areas and crown margins
 Treatment of cervical areas after professional cleaning and calculus removal

Advantages

- Biocompatible
- Permanent elimination of hypersensitivity
- Reliable adhesion
- Special filler technology for high abrasion resistance
- Fluoride release

REF 1650	Bottle 4.5 ml, accessories
REF 2247	Single Tim, application brushes, 100 pcs.

Perfect Bleach®

Whitening gel for discoloured teeth (10 % / 16 % carbamide peroxide)



Professional cleaning

Fissure sealing

Prophylaxis

Desensitiser

Whitening

Indications

Gentle and permanent tooth whitening for vital and non-vital teeth e.g. in cases of staining due to medication, fluorosis, food, trauma, ageing etc.

Advantages

- Simple user-friendly application
- Gentle on tooth substance and existing restorations
- Significant whitening effect already after a short time
- Pleasant menthol flavour
- Set in attractive cosmetic bag

Perfect Bleach® 10 %

- REF 1658 Mini set syringe 4 × 2.4 ml with 10 % carbamide peroxide, storage box, cosmetic bag
- REF 1662 Syringe 3 × 2.4 ml with 10 % carbamide peroxide

Perfect Bleach® 16 %

- REF 1659 Mini set syringe 4 × 2.4 ml with 16 % carbamide peroxide, storage box, cosmetic bag
- REF 1664 Set syringe 6 × 2.4 ml with 16 % carbamide peroxide, Block Out Gel LC syringe 1.2 ml, material for 2 trays, storage box, cosmetic bag, shade guide, accessories
- REF 1665 Syringe 3 × 2.4 ml with 16 % carbamide peroxide

Not available in Canada

Perfect Bleach® Office+

Whitening gel for discoloured teeth



35 %
H₂O₂

auto
mix

Indications

Perfect Bleach Office+ is suited for whitening individual or multiple discoloured, vital or devitalised teeth. The whitening success depends on the natural tooth shade as well as the intensity and cause of the discolouration. It is possible to whiten discolourations of organic origin, which generally have the following causes:

- discolouration as a result of traumata
- discolouration caused by medication (e.g. tetracycline)

Discolourations of inorganic origin, such as components of amalgam (silver), are not whitened, nor are restorations

Advantages

- 35 % hydrogen peroxide concentration for safe and fast whitening of discolourations
- Good contrast to the tooth and LC Dam due to red coloured material
- Can be used for both internal and external whitening
- Perfect Bleach Office+ in the convenient QuickMix syringe
 - only the amount of gel needed is activated
 - no mixing errors and the gel is always fresh
- No painful heat-loading from light-curing the gingiva protection

- REF 1672 Set QuickMix syringe 2 × 4 ml, LC Dam syringe 2 × 2 g, accessories
- REF 1673 QuickMix syringe 4 ml, accessories
- REF 1655 LC Dam syringe 2 g, accessories
- REF 2194 Mixing tips type 14, 50 pcs.
- REF 2195 Mixing tips type 15 (with intraoral tips type 1), 50 pcs.
- REF 2146 Application cannulae type 41, 100 pcs.

Not available in Canada, Ireland and United Kingdom



Direct Restoration

Stability. Aesthetics. Economy.

Conservative dentistry requires your expertise as a dentist in conjunction with absolutely reliable, high-quality restorative materials. For direct restorations VOCO offers you restoratives of a number of material classes for a great variety of indications. But there is one thing all our restorative materials have in common: our composites, compomers, ORMOCER[®]s and glass ionomer materials, as well as liners, bonding materials and glass fibre strands guarantee that results are characterised by stability and durability. Moreover, patients are looking for individual solutions to make their smile radiant. Our products, while being easy to use and quick to apply, help your restorations become predictable and plannable as well as aesthetic.



Calcimol LC

Light-curing radiopaque calcium hydroxide paste



REF 1047	Tube 2 × 5 g
REF 1307	Syringe 2 × 2.5 g, accessories
REF 2146	Application cannulae type 41, 100 pcs.

Indications

Indirect pulp capping
Lining under all filling materials

Advantages

- Effective protection of the pulp
- Ready-to-use one-component material
- Time-saving light-curing and direct application from the non-dripping NDT®-syringe
- High level of acid-resistance, protection when applying the total-etch technique
- Supports the formation of tertiary dentine

Calcicur®

Ready-to-use calcium hydroxide paste



REF 1093	Syringe 2.5 g, accessories
REF 1096	Syringe 3 × 2.5 g, accessories
REF 2131	Application cannulae type 47, 30 pcs.

Indications

Indirect capping for the treatment of caries profunda
Direct capping when the pulp is opened or a pulpotomy is performed
Lining of cavities to prevent exposure to acid media when using cements
For temporary filling of root canals

Advantages

- Suitable for use under any lining or restorative material
- Immediately ready for use
- With high pH value (12.5) known for bacteriostatic effect
- Calcium hydroxide content of 45 %
- Radiopacity
- Promotes the formation of tertiary dentine
- Effective pulp protection

Ionoseal®

Light-curing glass ionomer composite liner



Indications

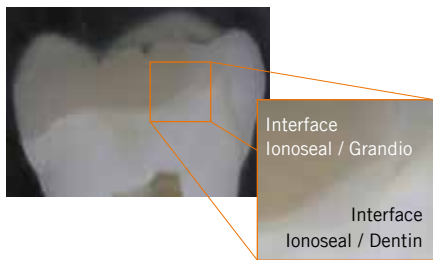
- Lining under all types of filling material
- Extended fissure sealing
- Restoration of smaller lesions

Advantages

- Ready-to-use one-component material
- Time-saving: light-curing in seconds
- Quick and hygienic application
- High compressive strength (226 MPa)
- Fluoride release against secondary caries
- High biocompatibility
- Radiopaque



REF 1126	Tube 2 × 4 g
REF 1326	Syringe 3 × 2.5 g, accessories
REF 2146	Application cannulae type 41, 100 pcs.

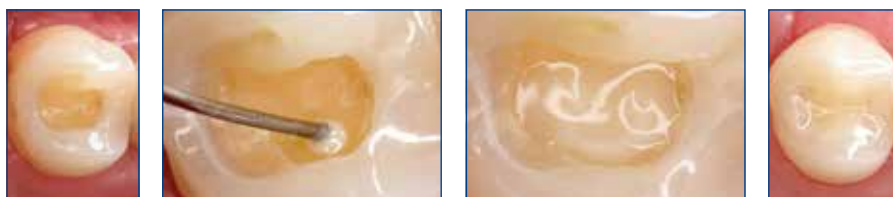


High radiopacity of Ionoseal, shown on the 28



Gap-free link between hard dental tissue, Ionoseal and the restorative (Grandio) – cross-cut microscope picture

Clinical Case



Prepared cavity Direct application Ionoseal Finished lining Final restoration

Source: Dr. Marcelo Balsamo, São Paulo / Brazil

Liner

Bonding

Restoratives (ORMOCER®s)

Restoratives (Composites)

Restoratives (Compomers)

Restoratives (Glass ionomer materials)

Bondings

Page	Product description	Components	Quantity bottles	Quantity SingleDose	Self-etch	Etch & Rinse		Light-curing	Dual-curing (chemical- and light-curing)	Time light curing
						Selective-etch	Total-etch			
Bondings										
19	Futurabond U	Dual-curing universal adhesive	2	1	•	•	•	•	•	10 sec.
20	Futurabond M+	Universal adhesive	1	1	•	•	•	•	• ¹	10 sec.
21	Futurabond DC	Dual-curing self-etch-bond reinforced with nano-fillers	2	2	•				•	10 sec.
22	Admira Bond	One-component dentine and enamel bond ORMOCER® based	1	1			•	•		20 sec.
22	Solobond M	Light-curing one-component dentine and enamel bond	1	1			•	•		20 sec.

¹ only in combination with DC activator

Futurabond® U

Dual-curing universal adhesive



Indications

Direct and indirect restorations using any light-curing, self-curing or dual-curing methacrylate-based restorative, core build-up or luting composite

Intraoral repair of fillings, ceramic veneers and all-ceramic restorations without additional primer

Treatment of hypersensitive tooth necks

Protective varnish for glass ionomer cement restorations

Sealing of cavities prior to amalgam restorations or prior to temporary luting

Luting of root posts with dual-curing or self-curing luting composites

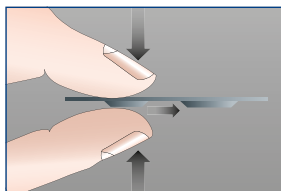
Advantages

- One bond for all cases! Makes all other adhesives in the practice redundant!
- Self-etch, selective-etch or total-etch – free choice for the practitioner
- Outstanding versatility of application
 - for direct or indirect restorations
 - fully compatible with all light-curing, dual-curing or self-curing methacrylate-based composites without additional activator for dual-curing
 - secure adhesion to various materials such as metal, zirconium dioxide or aluminium oxide, as well as silicate ceramics without additional primer
 - treatment of hypersensitive tooth necks
 - protective varnish for glass ionomer cement restorations etc.
- Applied in one layer – only 35 seconds total working time
- Outstanding adhesion compared to other universal, self or total-etch adhesives
- Moisture tolerant
- Refrigeration not necessary

Futurabond® U in practical *SingleDose*

- Easy, quick and hygienic
- No additional devices required
- No spilling in any position

It's just that easy – simply press, simply bond!



REF 1571	<i>SingleDose</i> 50 pcs., accessories
REF 1572	<i>SingleDose</i> 200 pcs., accessories
REF 1574	<i>SingleDose</i> trial pack (<i>SingleDose</i> 20 pcs., Vococid gel syringe 2 ml, accessories)
REF 2246	Endo Tim, application brushes, to be used in the root canal, 50 pcs.
REF 2247	Single Tim, application brushes, 100 pcs.

Futurabond® M+

Universal adhesive



Indications

Direct and indirect restorations using any light-curing methacrylate-based restorative, core build-up or luting composite

Intraoral repair of fillings, ceramic veneers and all-ceramic restorations without additional primer

Treatment of hypersensitive tooth necks

Protective varnish for glass ionomer cement restorations

Sealing of cavities prior to amalgam restorations or prior to temporary luting

In combination with Futurabond® M+ DCA (dual-cure activator)

Direct and indirect restorations using any self-curing or dual-curing methacrylate-based restorative, core build-up or luting composite

Luting of root posts with dual-curing or self-curing luting composites

REF 1515	Bottle 5 ml, accessories
REF 1516	Bottle 3 × 5 ml
REF 1518	Futurabond M+ DCA – bottle 2 ml
REF 2246	Endo Tim, application brushes, to be used in the root canal, 50 pcs.
REF 2247	Single Tim, application brushes, 100 pcs.
REF 2315	Mixing palettes, 20 pcs.

Free choice of etching technique:

- Self-Etch ✓
- Selective-Etch ✓
- Total-Etch ✓

For direct and indirect restorations using any light-curing, self-curing or dual-curing methacrylate-based composite.*

Applied in one layer – only **35 seconds** total working time.



Sufficient content for more than **250 applications.**

Optimal wetting properties ensure **reliable sealing** of dentinal tubules – no post-operative sensitivity.

Intraoral repair of fillings, ceramic veneers and all-ceramic restorations.

* in combination with Futurabond M+ DCA (dual-cure activator) when using self-curing or dual-curing composites

Futurabond® DC

Dual-curing self-etch-bond reinforced with nano-fillers



Indications

- Direct self- or dual-curing composite restorations and core build-ups
- Direct light-curing restoration with composite-, compomer- and ORMOCER® based restoratives
- Adhesive luting of root pins / posts with dual or self-curing composite cements
- Indirect restoration when using dual- and self-curing resin cements for luting of inlays, onlays, crowns and bridges

Advantages

- Chemical-curing in areas inaccessible with a curing light
- Futurabond DC achieves the same adhesive properties as total-etch preparations without separate etching of the tooth substance
- Moisture tolerant
- Durable marginal integrity
- Easy and fast application – one-coat, one-cure technique
- Contains fluorides
- No refrigerated storage needed
- Ideal for paediatric use



REF 1163	Bottle 2 × 4 ml (liquid 1 / liquid 2), accessories
REF 1164	SingleDose 50 pcs., accessories
REF 1165	SingleDose 200 pcs., accessories
REF 2246	Endo Tim, application brushes, to be used in the root canal, 50 pcs.
REF 2247	Single Tim, application brushes, 100 pcs.
REF 2315	Mixing palettes, 20 pcs.

Vococid®

Etchant for acid-etch technique

Indications

Etching liquid / gel for use in the enamel etching or in the total-etch technique

Advantages

- Available as a fluid (36.1 % phosphoric acid) or gel (35 % phosphoric acid)
- Blue colouring for visual monitoring during application
- Stable, non-dripping gel
- 60 ml syringe for keeping material in stock



REF 1063	Syringe 5 ml, accessories
REF 1224	Syringe 5 × 2 ml, accessories
REF 1256	Empty syringe 10 × 2 ml
REF 1257	Syringe 60 ml, empty syringe 2 × 2 ml, accessories
REF 2310	Application cannulae type 42, 30 pcs.
REF 2132	Application cannulae type 48, 50 pcs.

Liner

Bonding

Restoratives (ORMOCER®s)

Restoratives (Composites)

Restoratives (Compomers)

Restoratives (Glass ionomer materials)

Admira® Bond

One-component dentine and enamel bond ORMOCER® based



REF 2432 Bottle 2 × 4 ml
REF 2479 Bottle 4 ml
Not available in Canada

Indications

Direct restoration with all types of light-curing restoratives (ORMOCER®s, composites, compomers)

Advantages

- ORMOCER® based
- High adhesion and long-lasting marginal tightness
- One component – one layer
- Universal for all light-curing restoratives

Solobond M

Light-curing one-component dentine and enamel bond



REF 1226 Bottle 2 × 4 ml
REF 2249 Micro Tim, fine application brushes, 100 pcs.
REF 2315 Mixing palettes, 20 pcs.
REF 2338 Brush holder for VOCO disposable dental brushes and Micro Tim, 5 pcs.

Indications

Direct restorations of all cavity classes with all light-curing restoratives

Advantages

- One component – one application
- Excellent adhesion
- High material elasticity and permanently tight margins
- “Stick-immediately-effect” for easy application of the restorative
- Universal for all light-curing restoratives

RestoratIVES (Composites)

Page	ORMOCER®s	cavity class					base / liner	extended fissure sealing	restoration of deciduous teeth	core build-up	indirect inlays, onlays, veneers	shades		form of application	material class	filler content [% ww]
		I	II	III	IV	V						opaque	universal			
24	Admira Fusion 5	•	•	•	•	•	•	•	•	•	•	5		syringe, Caps	nano-hybrid	83
25	Admira Fusion	•	•	•	•	•	• ⁴	•	•	•	•	4	13	1	nano-hybrid	84
26	Admira Fusion Flow	•	•	•	•	•	•	•	•	•	•	2	9	1	nano-hybrid	74
27	Admira Fusion x-tra	•	•	•	•	•	• ⁴	•	•	•	•		1		nano-hybrid	84
28	Admira Fusion x-base	• ¹	•	•	•	•	• ⁴	•	•	•	•		1		nano-hybrid	72
Composites																
29	GrandioSO	•	•	•	•	•	•	•	•	•	•	3	13	1	nano-hybrid	89
30	GrandioSO Light Flow (low viscous)	•	•	•	•	•	•	•	•	•	•	2	5	1	nano-hybrid	76
30	GrandioSO Flow (medium viscous)	•	•	•	•	•	•	•	•	•	•	2	10	1	nano-hybrid	81
31	GrandioSO Heavy Flow (highly viscous)	•	•	•	•	•	•	•	•	•	•	2	10	1	nano-hybrid	83
32	GrandioSO x-tra	•	•	•	•	•	• ⁴	•	•	•	•		4		nano-hybrid	86
33	VisCaor bulk	•	•	•	•	•	• ⁴	•	•	•	•		4		nano-hybrid	83
34	Grandio	•	•	•	•	•	•	•	•	•	•	2	13	1	nano-hybrid	87
35	Grandio Flow	• ¹	•	•	•	•	•	•	•	•	•	2	10		nano-hybrid	80
36	Amaris / Amaris Flow	•	•	•	•	•	•	•	•	•	•	7	4		micro-hybrid	80
37	Amaris Gingiva	•	•	•	•	•	•	•	•	•	•	3	1		micro-hybrid	80
38	x-tra base	• ¹	•	•	•	•	• ⁴	•	•	•	•		2		micro-hybrid	75
39	x-tra fil	•	•	•	•	•	•	•	•	•	•		1		micro-hybrid	86
41	Polofil Supra	•	•	•	•	•	•	•	•	•	•	6	1		micro-hybrid	77
Compomers																
41	Twinkly Star / Flow							•				8 ² / 2 ²		NDT® syringe, Caps	Compomer	78 / 65

¹ small ² coloured, with glitter effect ³ molars / premolars ⁴ class I + II

An overview of our glass ionomer restorative materials can be found on page 42.

Admira® Fusion 5

Universal nano-hybrid ORMOCER® restorative material with simplified shade system



NEW

Indications

- Class I to V restorations
- Base in class I and II cavities
- Reconstruction of traumatically damaged anteriors
- Facetting of discoloured anteriors
- Correction of shape and shade for improved aesthetic appearance
- Locking, splinting of loose teeth
- Repairing veneers, small enamel defects and temporary C&B-materials
- Extended fissure sealing
- Restoration of deciduous teeth
- Core build-up
- Composite inlays

Advantages

- Simplified shade system
 - all VITA® classical shades can be covered with just 5 Cluster-Shades – there is no need for multiple layering or an additional opaquer or blocker
 - significantly reducing your inventory
 - new resin matrix enables enhanced chameleon effect through optimised light scattering
- Universal
 - completely universal – for the highest demands in anterior and posterior regions
- Easy and fast handling
 - only 10 seconds light-curing for all shades
 - excellent sculptability, no sticking to the instrument
 - compatible with all conventional bondings
- Innovative ORMOCER® technology
 - purely ceramic-based filling material, as fillers and resin matrix based purely on silicon oxide
 - excellent biocompatible, as no classic monomers are contained (no Bis-GMA [BPA], TEGDMA, UDMA, etc.)
 - highly stable material as well by far the lowest polymerisation shrinkage (1.25 % by volume) and particularly low level of shrinkage stress in comparison to all conventional restorative composites

pure silicate technology

nanohybrid technology

83 % w/w

class I-V restorations

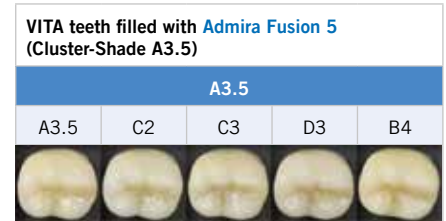
310% radiopacity

10 sec light-curing

shrinkage 1.25%

5 shades

REF 6243	Trial pack 10 × 0.2 g Caps (2 each of × A1, A2, A3, A3.5, A4), 10 × Futurabond U <i>SingleDose</i> , shade card, accessories	
REF 6225	Set Syringe 5 × 3 g (A1, A2, A3, A3.5, A4), shade card	
REF 6235	Caps 75 × 0.2 g (15 each of × A1, A2, A3, A3.5, A4), shade card	
Shade	Syringe 3 g	Caps 15 × 0.2 g
A1	REF 6227	REF 6237
A2	REF 6228	REF 6238
A3	REF 6229	REF 6239
A3.5	REF 6230	REF 6240
A4	REF 6231	REF 6241
<i>Not available in Canada</i>		



Cluster-Shade-System

Admira Fusion 5	A1				A2		A3			A3.5				A4		
VITA® classical	A1	B1	C1	D2	A2	B2	A3	B3	D4	A3.5	C2	C3	D3	B4	A4	C4

Liner
 Bonding
 Restoratives (ORMOCER®S)
 Restoratives (Composites)
 Restoratives (Compomers)
 Restoratives (Glass ionomer materials)

Admira® Fusion

Universal nano-hybrid ORMOCER® restorative material



Indications

- Class I to V restorations
- Base in class I and II cavities
- Reconstruction of traumatically damaged anteriors
- Facetting of discoloured anteriors
- Correction of shape and shade for improved aesthetic appearance
- Locking, splinting of loose teeth
- Repairing veneers, small enamel defects and temporary C&B-materials
- Extended fissure sealing
- Restoration of deciduous teeth
- Core build-up
- Composite inlays

Advantages

- The worldwide first purely ceramic-based restorative material
 - Pure Silicate Technology, i.e., fillers and resin matrix based purely on silicon oxide
 - contains no classic monomers (no Bis-GMA [BPA], TEGDMA, UDMA, etc.)
- Thanks to the most innovative ORMOCER® technology
 - by far the lowest polymerisation shrinkage (1.25 % by volume) and particularly low level of shrinkage stress in comparison to all conventional restorative composites
 - inert, so excellent biocompatible and extremely resistant to discolouration
- Completely universal – meeting highest demands in anterior and posterior regions
 - perfect coordination of translucence with opacity for natural results
 - the optimal selection of shades enables highly flexible working using either the single or multiple shade system
- Excellent handling, simple high-lustre polishing procedure coupled with high surface hardness guarantee first-class long-term results
- Compatible with all conventional bondings

Clinical Case



Insufficient amalgam restorations in teeth 46 and 47

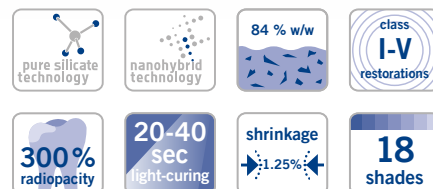


Modeling of the material which is still malleable at this stage



Finished, polished restorations

Source: Dr. Sanzio Marques, Passos / Brazil



REF 2750	Set + bond syringe 5 × 3 g (A2, A3, GA3.25, A3.5, Admira Fusion x-tra), shade guide + Futurabond U SingleDose 20 pcs., accessories	
REF 2778	Trial kit Caps 9 × 0.2 g (3 each of A2, A3, A3.5), Admira Fusion Flow syringe 2 g A3, Admira Fusion x-tra Caps 3 × 0.2 g universal, accessories	
REF 2780	Set + bond Caps 75 × 0.2 g (15 each of A2, A3, GA3.25, A3.5, Admira Fusion x-tra), shade guide + Futurabond U SingleDose 20 pcs., accessories	
REF 2752	Shade guide	
REF 9301	Dispenser – Caps	
Shade	Syringe 3 g	Caps 15 × 0.2 g
A1	REF 2754	REF 2782
A2	REF 2755	REF 2783
A3	REF 2756	REF 2784
A3.5	REF 2758	REF 2786
A4	REF 2759	REF 2787
B1	REF 2762	REF 2790
B2	REF 2763	REF 2791
B3	REF 2764	REF 2792
C2	REF 2766	REF 2794
D3	REF 2768	REF 2796
OA1	REF 2770	REF 2798
OA2	REF 2771	REF 2799
OA3	REF 2772	REF 2800
OA3.5	REF 2773	REF 2801
BL	REF 2775	REF 2803
BXL NEW	REF 2777	REF 2805
Incisal	REF 2776	REF 2804
GA3.25	REF 2757	REF 2785
GA5	REF 2760	REF 2788
Mixed	–	REF 2806*

*(3 each of B1, B3, D3, BL, Incisal)

Liner

Bonding

Restoratives (ORMOCER®S)

Restoratives (Composites)

Restoratives (Compomers)

Restoratives (Glass ionomer materials)

Admira® Fusion Flow

Flowable light-curing nano-hybrid ORMOCER® restorative material



Indications

- Filling of small cavities and extended fissure sealing
- Blocking out undercuts
- Lining or coating cavities
- Fillings of class III - V cavities
- Repairing fillings, veneers and temporary restorations
- Luting translucent prosthetic pieces
- Locking, splinting of loose teeth

Advantages

- The worldwide first purely ceramic-based flowable restorative material
 - pure Silicate Technology, i.e. fillers and resin matrix based purely on silicon oxide
 - contains no classic monomers
- Thanks to the most innovative ORMOCER® technology
 - extremely low polymerisation shrinkage (2.75 % by volume) and particularly low level of shrinkage stress in comparison to conventional flowable restorative composites
 - inert, so excellent biocompatible and extremely resistant to discolouration
- “Flow on demand” – the material becomes flowable only when under pressure or in motion. When the application has been completed, it is stable enough not to flow out of the cavity.
- Excellent surface affinity with complete wetting of the cavity walls
- VOCO's patented, non-running and non-dripping NDT®-syringe ensures reliable and perfectly precise application. Undesirable loss of material is thus a thing of the past.
- 12 shades for aesthetic restorations – perfectly matching the shade range of the packable version, Admira Fusion
- Excellent handling, simple high-lustre polishing procedure coupled with high surface hardness guarantee first-class long-term results
- Compatible with all conventional bonding agents

Clinical Case



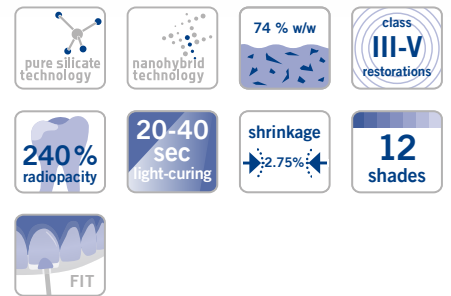
Mesial caries on tooth 12, disto-palatal caries on tooth 11



Simple application and optimal wetting behaviour of Admira Fusion Flow



Outstanding result created with Admira Fusion Flow / Admira Fusion



REF 2816	Set syringe 5 × 2 g (A1, A2, A3, A3.5, WO), shade guide, accessories
REF 2146	Application cannulae type 41, 100 pcs.
Shade	Syringe 2 × 2 g
A1	REF 2818
A2	REF 2819
A3	REF 2820
A3.5	REF 2821
A4	REF 2822
B1	REF 2824
B2	REF 2825
C2	REF 2826
Incisal	REF 2828
OA2	REF 2829
BL	REF 2831
WO	REF 2832

Source: Dr. Walter Denner, Fulda / Germany

Admira® Fusion x-tra

Nano-hybrid ORMOCER® restorative material, 4 mm



Indications

- Class I and II posterior restorations
- Base in class I and II cavities
- Class V restorations
- Locking, splinting of loose teeth
- Repairing veneers, small enamel defects and temporary C&B-materials
- Extended fissure sealing
- Restoration of deciduous teeth
- Core build-up

Advantages

- Purely ceramic-based, bulk fill restorative material
- Fast and high-quality – reliable curing of 4 mm layers
- Thanks to the most innovative ORMOCER® technology
 - by far the lowest polymerisation shrinkage (1.25 % by volume) and particularly low level of shrinkage stress, providing optimal marginal integrity
 - inert, so excellent biocompatible and extremely resistant to discolouration
- Excellent handling, simple high-lustre polishing procedure coupled with high surface hardness guarantee first-class long-term results
- Universal shade with chameleon effect
- Compatible with all conventional bonding agents

Clinical Case



Insufficient composite restoration in tooth 45



Prepared cavity awaiting filling



Application of Admira Fusion x-tra in 4-mm layers



Functional and aesthetic final result

Source: Dr. Walter Denner, Fulda / Germany



REF 2810	Syringe 3 g universal
REF 2811	Caps 15 × 0.2 g universal
REF 9301	Dispenser – Caps

Liner

Bonding

Restoratives (ORMOCER®S)

Restoratives (Composites)

Restoratives (Compomers)

Restoratives (Glass ionomer materials)

Admira® Fusion x-base

Flowable nano-hybrid ORMOCER® base restorative material, 4 mm



Indications

Base in class I and II cavities

Cavity lining under direct restorative materials in class I and II cavities

Small, non occlusal stress-bearing class I restorations according to minimally invasive filling therapy

Class III and V restorations

Extended fissure sealing

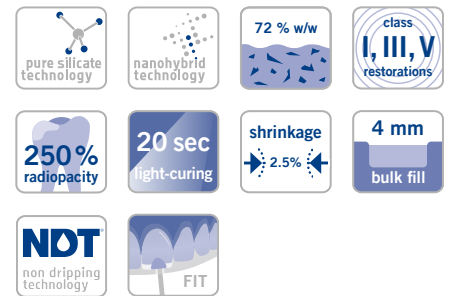
Undercut blockout

Repair of small enamel defects

Repair of small defects in aesthetic indirect restorations

Repair of temporary C&B-materials

Core build-up



REF 2812	Syringe 2 × 2 g universal, accessories
REF 2148	Application cannulae type 46, 100 pcs.

Advantages

- Purely ceramic-based
- Fast and high-quality – 4 mm restoration base in one simple step
- Thanks to the most innovative ORMOCER® technology
 - extremely low polymerisation shrinkage (2.5 % by volume) and particularly low level of shrinkage stress, providing optimal marginal integrity
 - inert, so excellent biocompatible and extremely resistant to discolouration
- Perfect surface affinity and excellent handling
- Compatible with all conventional bonding agents

Clinical Case



Occlusal caries in tooth 36



Cavity prepared for further procedure in accordance with the rules of adhesive filling therapy



Selective etching of the tooth enamel



Application of the bonding agent Futurabond M+



Application of Admira Fusion x-base in 4-mm layers, followed by light-curing



Covering with Admira Fusion, followed by light-curing



Functional and aesthetic final result

Source: Prof. Dr. Jürgen Manhart, Munich / Germany

Grandio®SO

Universal nano-hybrid restorative material



Indications

- Fillings of class I to V cavities
- Reconstruction of traumatically damaged anteriors
- Facetting of discoloured anteriors
- Correction of shape and shade for improved aesthetic appearance
- Locking, splinting of loose teeth
- Repairing veneers
- Restoration of deciduous teeth
- Core build-up under crowns
- Composite inlays

Advantages

- Toothlike restorative for reliable restorations
- Very high filler content of 89 % w/w
- All-purpose for the highest demands in both the anterior and posterior tooth regions
- Excellent light resistance
- Optimal coordination of opacity and translucency for results that mirror the natural tooth using only one shade
- Smooth consistency, non-sticky, best sculptability
- Easily polishes to a high gloss – lasting, smooth surface
- Compatible with all conventional bonds

Clinical Cases



Fillings in 14, 15 in need of replacement due to secondary caries



15 with the distal marginal ridge modelling complete



Completed restoration

Source: Dr. Walter Denner, Fulda / Germany



Insufficient composite fillings of teeth 11 and 21



Application of increments using GrandioSO A3.5



Completed restoration

Source: Dr. Sanzio Marques, Passos / Brazil



nanohybrid technology

89 % w/w

class I-V restorations

320% radiopacity

10-20 sec light-curing

shrinkage $\pm 1.6\%$

17 shades

REF 2600	Set syringe 5 × 4 g (A2, A3, A3.5, GA3.25, GA5), shade guide	
REF 2640	Set Caps 80 × 0.25 g (16 each of A2, A3, A3.5, GA3.25, GA5), shade guide	
REF 2607	Shade guide	
REF 9301	Dispenser – Caps	
Shade	Syringe 4 g	Caps 16 × 0.25 g
A1	REF 2610	REF 2650
A2	REF 2611	REF 2651
A3	REF 2612	REF 2652
A3.5	REF 2614	REF 2654
A4	REF 2615	REF 2655
B1	REF 2619	REF 2659
B2	REF 2620	REF 2660
B3	REF 2621	REF 2661
C2	REF 2624	REF 2664
D3	REF 2627	REF 2667
Incisal	REF 2629	REF 2669
OA1	REF 2630	REF 2670
OA2	REF 2631	REF 2671
OA3.5	REF 2633	REF 2673
BL	REF 2635	REF 2675
GA3.25	REF 2613	REF 2653
GA5	REF 2616	REF 2656

Liner

Bonding

Restoratives (ORMOCER®s)

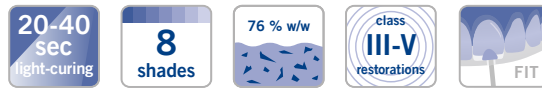
Restoratives (Composites)

Restoratives (Compomers)

Restoratives (Glass ionomer materials)

Grandio®SO Light Flow

Flowable nano-hybrid restorative material – low viscous



Indications

- Filling / characterisation of small cavities
- Filling / characterisation of class III, IV and V cavities
- Extended fissure sealing
- Blocking out undercuts
- Lining or coating cavities
- Repairing fillings, veneers and temporary restorations
- Luting translucent prosthetic pieces

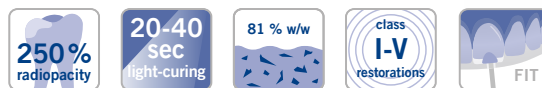
Advantages

- Low viscosity – outstanding flow properties and therefore optimally suitable for hard-to-reach areas and small cavities
- Extra-fine cannula – for precise and pinpoint application, dosage without excess residues
- High performance – excellent physical properties, e.g. filler content of 76 % by weight
- High aesthetics – 8 shades for individualised applications
- Excellent handling – NDT-syringe – non-drip, compatible with all light-curing bonding materials

REF 2585	Set syringe 5 x 2 g (A1, A2, A3, A3.5, WO), shade guide, accessories		
REF 2144	Application cannulae type 44, 100 pcs.		
REF 2147	Application cannulae type 45, 100 pcs.		
Shade	Syringe 2 x 2 g	Shade	Syringe 2 x 2 g
A1	REF 2586	B1	REF 2590
A2	REF 2587	WO	REF 2591
A3	REF 2588	OA2	REF 2592
A3.5	REF 2589	Incisal	REF 2593

Grandio®SO Flow

Flowable universal nano-hybrid restorative material



Indications

- Fillings of class I to V cavities
- Minimally invasive filling therapy
- Extended fissure sealing
- Blocking out undercuts
- Lining or coating cavities
- Repairing fillings and veneers
- Luting translucent prosthetic pieces (e.g., full ceramic crowns, etc.)
- Interlocking and splinting teeth (e. g., with glass fibre strands)
- Use as a base material in combination with glass fibres or similar products for fabricating semi-permanent crowns and bridges

Advantages

- Medium viscous flow composite, i.e. outstanding flow behaviour with complete wetting of the cavity walls
- Universal application – for indication-appropriate treatment of all cavity classes
- Physical properties superior to those of various other packable materials, e.g. hardness, stability, abrasion resistance
- Very high filler content of over 80 % w/w
- Safe and precise application
- 13 shades for aesthetic restorations – perfectly coordinated with GrandioSO

REF 2720	Set syringe 5 x 2 g (A1, A2, A3, A3.5, WO), shade guide, accessories	
Shade	Syringe 2 x 2 g	Caps 16 x 0.25 g
A1	REF 2722	REF 2742
A2	REF 2723	REF 2743
A3	REF 2724	REF 2744
A3.5	REF 2725	REF 2745
A4	REF 2726	REF 2746
B1	REF 2729	REF 2749
B2	REF 2730	–
C2	REF 2732	–
Incisal	REF 2733	–
OA2	REF 2734	–
BL	REF 2736	–
WO	REF 2737	–
GA5	REF 2727	–

Liner

Bonding

Restoratives (ORMOCERs)

Restoratives (Composites)

Restoratives (Compomers)

Restoratives (Glass ionomer materials)

Grandio®SO Heavy Flow

Flowable universal nano-hybrid restorative material – highly viscous



Indications

- Fillings of class I to V cavities
- Minimally invasive filling therapy
- Extended fissure sealing
- Blocking out undercuts
- Lining or coating cavities
- Repairing fillings and veneers
- Luting translucent prosthetic pieces (e.g., full ceramic crowns, etc.)
- Interlocking and splinting teeth (e.g., with glass fibre strands)
- Use as a base material in combination with glass fibres or similar products for fabricating semi-permanent crowns and bridges

Advantages

- Increased stability in comparison to conventional flowables, i.e. no undesirable runoff
- Universal application – for indication-appropriate treatment of all cavity classes
- Physical properties superior to those of various other packable materials, e.g. hardness, stability, abrasion resistance
- Very high filler content of 83 % w/w
- Precise application with complete wetting of the cavity walls
- Precise dosing without excess for time-saving work
- Undercuts, approximal boxes and paragingival areas can be easily filled
- Ideal for use in combination with GrandTEC
- 13 shades for aesthetic restorations – perfectly coordinated with GrandioSO
- High shade stability
- Very good polishability and durable brilliance
- Available in the non-dripping NDT®-syringe and in Flow-Caps with flexible metal cannulae

Clinical Case



Typical V-shaped cervical defect on 13

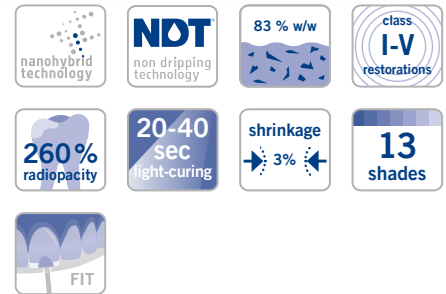


Application of GrandioSO Heavy Flow after conditioning and bonding



Restoration immediately after polishing

Source: Dr. Walter Denner, Fulda / Germany



REF 2680	Set syringe 5 × 2 g (A2, A3, A3.5, WO, GA5), shade guide, accessories	
REF 2607	Shade guide	
REF 9301	Dispenser – Caps	
REF 2148	Application cannulae type 46, 100 pcs.	
Shade	Syringe 2 × 2 g	Caps 16 × 0.25 g
A1	REF 2684	REF 2704
A2	REF 2685	REF 2705
A3	REF 2686	REF 2706
A3.5	REF 2687	REF 2707
A4	REF 2688	REF 2708
B1	REF 2690	REF 2712
B2	REF 2691	–
C2	REF 2692	–
OA2	REF 2693	–
Incisal	REF 2694	–
BL	REF 2695	–
WO	REF 2696	–
GA5	REF 2689	–

Liner

Bonding

Restoratives (ORMOCER®s)

Restoratives (Composites)

Restoratives (Compomers)

Restoratives (Glass ionomer materials)

Grandio®SO x-tra

Aesthetic nano-hybrid bulk restorative material

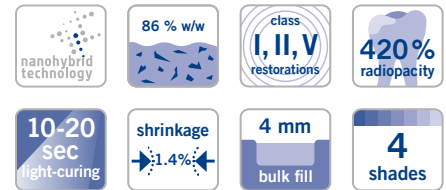


Indications

Class I and II posterior restorations
 Base in class I and II cavities
 Class V restorations
 Locking, splinting of loose teeth
 Repairing veneers, enamel defects and temporary C&B-materials
 Extended fissure sealing
 Restoration of deciduous teeth
 Core build-up

Advantages

- Quick and aesthetic posterior restorations
- Higher level of hardness than other bulk fill composites – on the surface, as well as at a depth of 4 mm
- Very high filler content (86 % w/w) and extremely low polymerisation shrinkage (1.4 % by volume)
- In shades A1, A2, A3 and universal
- High shade stability
- Excellent handling and simple high-lustre polishing procedure



REF 9301	Dispenser – Caps
Shade	Caps 16 × 0.25 g
Universal	REF 2714
A1	REF 2715
A2	REF 2716
A3	REF 2717
Shade	Caps 80 × 0.25 g
A3	REF 2719

GrandTEC®

Resin-impregnated light-curing glass fibre strands for dental adhesive technique



Indications

Stabilisation of teeth
 – after orthodontic therapy
 – after periodontal therapy
 For support in trauma therapy
 – locking and splinting avulsed or loose teeth
 – fragment fixation after fracture
 For reinforcing / fabricating provisional bridges made from composite and temporary C&B-materials
 For temporary treatment after extraction and replacing a missing tooth using an artificial tooth

For temporary or semi-permanent treatment of a tooth space using an extracted, natural tooth
 For temporary treatment after placing an implant during the osseointegration of the implant

Advantages

- Additional product for reinforcing composite / flow composite in traumatology, periodontics, orthodontics, conservative dentistry and prosthodontics

REF 1168	Glass fibre strands 5 × 55 mm
REF 1169	Test Kit 5 glass fibre strands 55 mm each, model, application aids, GrandioSO Heavy Flow syringe 2 × 2 g A3, accessories

VisCalor® bulk

Thermoviscous bulk fill composite

Suitable preheating device required (p.83)

Indications

- Class I and II posterior restorations
- Base in class I and II cavities
- Class V restorations
- Locking, splinting of loose teeth
- Repairing veneers, enamel defects and temporary C&B-materials
- Extended fissure sealing
- Restoration of deciduous teeth
- Core build-up

Advantages

- Warming of the material makes it flowable for the application and then sculptable immediately afterwards (thermoviscous technology)
- Optimal flowing to margins and undercut regions – minimises risk of marginal gaps
- 4 mm bulk fill without covering layers
- Bubble-free application
- One universal and three aesthetic shades
- Slender cannula – ideal for hard-to-reach areas

Clinical Case



Cleaned cavities



Applying the heated VisCalor bulk with its superb creamy consistency and slender cannula



Adapting the sculptable VisCalor bulk



Polished and rehydrated class II cavities the day after filling placement

Source: Dr. Fernando Feitosa, Americana / Brazil



TVT thermo-viscous-technology	nanohybrid technology	83 % w/w	class I, II, V restorations
10-20 sec light-curing	shrinkage 1.4%	4 mm bulk fill	4 shades
FIT			

REF 6062	Set Dispenser Caps 80 × 0.25 g (16 × universal, 16 × A1, 16 × A2, 32 × A3), VisCalor Dispenser
REF 6063	Set Caps Warmer Caps 80 × 0.25 g (16 × universal, 16 × A1, 16 × A2, 32 × A3), Caps Warmer
REF 6065	Caps 16 × 0.25 g universal
REF 6066	Caps 16 × 0.25 g A1
REF 6067	Caps 16 × 0.25 g A2
REF 6068	Caps 16 × 0.25 g A3



Liner

Bonding

Restoratives (ORMOCER®s)

Restoratives (Composites)

Restoratives (Compomers)

Restoratives (Glass ionomer materials)

Grandio®

Universal nano-hybrid restorative material



Indications

Class I to V fillings

Reconstruction of traumatically affected anteriors

Facetting of discoloured anteriors

Correction of shape and shade for better aesthetic appearance

Locking, splinting of loose teeth

Repairing veneers

Filling deciduous teeth

Core-build-up under crowns

Composite inlays

Advantages

- Excellent physical properties for long-lasting restorations
- Significantly lower polymerisation shrinkage than conventional composites
- High filler content of 87 % w/w
- Extremely high abrasion resistance
- High transverse strength
- Smooth consistency for convenient handling
- Excellent aesthetics
- Can be used with all dentine / enamel bonding agents
- Available in 16 shades
- Shade guide made from original material

REF 1800	Set syringe 5 × 4 g (A1, A2, A3, A3.5, B2), shade guide	
REF 1830	Set Caps 50 × 0.25 g (10 each of A1, A2, A3, A3.5, B2), shade guide	
REF 1899	Shade guide	
REF 9301	Dispenser – Caps	
Shade	Syringe 4 g	Caps 20 × 0.25 g
A1	REF 1810	REF 1840
A2	REF 1811	REF 1841
A3	REF 1812	REF 1842
A3.5	REF 1813	REF 1843
A4	REF 1814	REF 1844
B1	REF 1824	REF 1854
B2	REF 1815	REF 1845
B3	REF 1816	REF 1846
C2	REF 1817	REF 1847
C3	REF 1818	REF 1848
D2	REF 1825	REF 1855
D3	REF 1819	REF 1849
Incisal	REF 1820	–
OA2	REF 1821	REF 1851
OA3.5	REF 1822	REF 1852
BL	REF 1823	REF 1853

Clinical Case



Initial situation



Preparation and Grandio Flow liner



Completed restoration with Grandio

Source: Dr. Marcelo Balsamo, São Paulo / Brazil

Grandio® Flow

Flowable universal nano-hybrid restorative material



Indications

- Filling minimally invasive cavities of all classes
- Filling small class I cavities and extended fissure sealing
- Filling class II - V cavities including V-shaped defects and cervical caries
- Blocking out undercuts
- Lining or coating cavities
- Repairing fillings and veneers
- Luting translucent prosthetic pieces (e.g. full ceramic crowns, etc.)

Advantages

- Optimal flowability
- High filler content of 80 % w/w
- Exact shade match to Grandio
- Excellent wetting properties
- Microhybrid composite – like physical properties
- Significantly lower polymerisation shrinkage than conventional flowables
- Very good abrasion resistance
- High transverse strength
- Can be used with all conventional bonding agents
- The shades BL (bleach light) and WO (white opaque) fulfil special indications: Bleach light is suited for bleached teeth and for use in paediatric dentistry. The shade white opaque makes an ideal restoration base on e.g. discoloured dentine areas and in core build-up

Grandio® Flow in the NDT®-syringe

- NDT® means non-dripping-technology
- Especially for fine-flowing materials
- Can be dosed and applied precisely
- Without any loss of material



REF 1860	Set syringe 8 × 2 g (A1, 2 × A2, 2 × A3, A3.5, B2, OA2), shade guide, accessories	
REF 1899	Shade guide	
REF 9301	Dispenser – Caps	
REF 2146	Application cannulae type 41, 100 pcs.	
Shade	Syringe 2 × 2 g	Caps 20 × 0.25 g
A1	REF 1863	REF 1880
A2	REF 1864	REF 1881
A3	REF 1865	REF 1882
A3.5	REF 1866	REF 1883
A4	REF 1868	–
B1	REF 1869	–
B2	REF 1867	–
C2	REF 1873	–
D2	REF 1874	–
OA2	REF 1870	–
BL	REF 1871	–
WO	REF 1872	–

Liner

Bonding

Restoratives (ORMOCER®s)

Restoratives (Composites)

Restoratives (Compomers)

Restoratives (Glass ionomer materials)

Amaris® · Amaris® Flow

Highly aesthetic light-curing restorative material



Indications

- Aesthetic restoration of class III, IV and V cavities in anterior teeth
- Aesthetic restoration of class I, II and V cavities in posterior teeth
- Reconstruction of traumatically damaged anterior teeth
- Direct and indirect composite veneers and facing of discoloured anterior teeth
- Shape and shade correction for improved aesthetics
- Repairing highly aesthetic porcelain, e.g. veneers
- Splinting of anterior teeth

Advantages

- Two simple steps, perfect results
- Layering like in nature: shades are created from the inside of the tooth
- Simple and precise shade match
- Natural shade transitions automatically
- Natural aesthetics can be achieved with only 11 shades in a simple layer technique
- Easy to learn, fast aesthetic results
- Intuitive approach, no preconceived shades
- Non-sticky consistency is ideal for modelling and shaping
- Long resistance to ambient and chair light
- Optimal polishability
- Natural fluorescence and high colour stability
- Good chameleon effect for invisible restorations

Advantages Amaris® Flow

- The ideal addition to Amaris
- Simple modelling of the incisal edge
- Easy wetting
- Fine cannula allows to apply small amounts

Clinical Case



Insufficient mod composite restoration in tooth 25



Incremental layers of opaque dentine base shade



Final layer with translucent enamel shade

Source: Dr. Andreas Braun, Dr. Felix Krause, Bonn / Germany



REF 1930	Set syringe 8 × 4 g (O1, O2, O3, O4, O5, TL, TN, TD), Amaris Flow syringe 2 × 1.8 g (HT, HO), shade guide, accessories
REF 1932	Set syringe 5 × 4 g (O1, O2, TL, TN, TD), shade guide
REF 1949	Starter set Caps 32 × 0.25 g (4 each of O1, O2, O3, O4, O5, TL, TN, TD), Amaris Flow syringe 2 × 1.8 g (HT, HO), shade guide, accessories
REF 1969	Shade guide
REF 9301	Dispenser – Caps
REF 2144	Application cannulae type 44, 100 pcs.
Base shade	
Opaque	Syringe 4 g Caps 16 × 0.25 g
O1	REF 1933 REF 1953
O2	REF 1934 REF 1954
O3	REF 1935 REF 1955
O4	REF 1936 REF 1956
O5	REF 1937 REF 1957
O Bleach	REF 1938 REF 1958
Enamel shade	
Translucent	Syringe 4 g Caps 16 × 0.25 g
Light, TL	REF 1940 REF 1960
Neutral, TN	REF 1941 REF 1961
Dark, TD	REF 1942 REF 1962
Amaris® Flow	
Special shade	Syringe 2 × 1.8 g
High translucent, HT	REF 1945
High opaque, HO	REF 1946
<i>REF 1932 and 1949 are not available in Canada</i>	

Liner
Bonding
Restoratives (ORMOCERs)
Restoratives (Composers)
Restoratives (Glass ionomer materials)

Amaris® Gingiva

Highly aesthetic light-curing restorative material in gingiva shades



Indications

Class V restorations (cervical caries, root erosion, V-shaped defects) especially in cases of retreating gingiva e.g. as a result of periodontic disease

Covering of exposed discoloured hyper-sensitive cervical areas, especially in the visible anterior area

Highly aesthetic correction of mal-positions of teeth, for direct veneers, facings and corrections of the red-white aesthetics

Advantages

- One base shade, combined with three mixable opaquers, can reproduce almost all gingival shades
- Aesthetic and functional solution for cavities and V-shaped defects in cervical areas exposed by gingival recession
- Latest composite technology – Amaris know-how in gingiva shades



REF 1970	Set syringe 4 g base shade, syringe 3 x 1.2 g opaquers (white, light, dark), shade guide, accessories
REF 1971	Syringe 4 g nature
REF 2147	Application cannulae type 45, 100 pcs.
REF 2309	Disposable brushes for dental brush holder, 100 pcs.
REF 2338	Brush holder for VOCO disposable dental brushes and Micro Tim, 5 pcs.

FinalTouch®

Light-curing characterisation material



Indications

Personalised characterisation of direct and indirect composite restorations

Masking of tooth discolourations

Characterisation of chairside CAD / CAM veneers

Advantages

- Reproduction of enamel characteristics
- Perfect extension of VOCO's range of composite and ORMOCER® restorative materials
- Excellent handling for high-aesthetic results
- Fine material structure and homogeneous consistency for accurate application
- In the non-dripping NDT®-syringe
- 5 colours with opacity corresponding to the area of application



REF 2321	Set syringe 5 x 1.5 g (white, blue, yellow, orange, brown), accessories
REF 2323	Syringe 1.5 g white, accessories
REF 2324	Syringe 1.5 g blue, accessories
REF 2325	Syringe 1.5 g yellow, accessories
REF 2326	Syringe 1.5 g orange, accessories
REF 2327	Syringe 1.5 g brown, accessories
REF 2147	Application cannulae type 45, 100 pcs.

Not available in Canada

Liner

Bonding

Restoratives (ORMOCER®s)

Restoratives (Composites)

Restoratives (Compomers)

Restoratives (Glass ionomer materials)

x-tra base®

Flowable light-curing base composite



Indications

- Base in class I and II cavities
- Cavity lining under direct restorative materials in class I and II cavities
- Small, non occlusal stress-bearing class I restorations according to minimally invasive filling therapy
- Class III and V restorations
- Extended fissure sealing
- Undercut block out
- Repair of small enamel defects
- Repair of small defects in aesthetic indirect restorations
- Repair of temporary C&B-materials
- Core build-up

NDT non dripping technology	75 % w/w	class I, III, V restorations	350% radiopacity
10 sec light-curing	shrinkage 2.6%	4 mm bulk fill	2 shades
FIT			

Advantages

- 4 mm restoration base in one simple step
- Cures reliably in only 10 seconds (shade universal)
- Perfect surface affinity for outstanding adaption
- Low shrinkage stress
- High level of radiopacity (350 %Al)
- Self-levelling
- Can be combined with any methacrylate-based bonding or composite
- The non-dripping NDT®-syringe or convenient Flow-Caps with bendable metal cannulae ensure a reliable, precisely accurate application

REF 1790	Syringe 2 × 2 g universal, accessories
REF 1791	Syringe 2 × 2 g A2, accessories
REF 1794	Caps 16 × 0.25 g universal
REF 1795	Caps 16 × 0.25 g A2
REF 9301	Dispenser – Caps
REF 2148	Application cannulae type 46, 100 pcs.

Application



A fully prepared cavity



Coating of the cavity walls with Futurabond DC



Start at the deepest point in the cavity ...



... and fill up to 4 mm with x-tra base



Apply a 2 mm occlusal layer of GrandioSO



Finished restoration

Liner

Bonding

Restoratives (ORMOCERs)

Restoratives (Composites)

Restoratives (Compomers)

Restoratives (Glass ionomer materials)

x-tra fil®

Light-curing posterior filling material



Indications

Class I and II posterior fillings
Core build-up

Advantages

- Curing depth 4 mm
- Curing time only 10 s
- Universal shade
- Long-lasting and economic
- Reduced working time, especially in combination with any Futurabond *SingleDose* adhesive
- Easy handling
- Excellent physical properties

Clinical Cases



Initial situation

Dr. Tomislav Skrinjaric, Croatia



Final result



Tooth 26 with an amalgam restoration in need of replacement



The glistening surface indicates excellent wetting with the bond before polymerisation



Modeling the marginal ridge against the matrix



Filling the cavity in 4 mm increments



Filling the palatal cavity



Finished treatment with x-tra fil

Source: Prof. Dr. Jürgen Manhart, Munich / Germany



86 % w/w	class I-II restorations	330% radiopacity	10 sec light-curing
shrinkage 1.7%	4 mm bulk fill		

REF 1739	Syringe 10 × 5 g
REF 1740	Syringe 5 g
REF 1741	Caps 20 × 0.25 g
REF 9301	Dispenser – Caps

“The excellent physical properties of x-tra fil enable me to offer my patients a durable posterior restoration. Especially the quick application fascinated me. Due to its excellent chameleon effect, x-tra fil offers an incredibly good colour adaptation to the tooth structure.”

Dr. Tomislav Skrinjaric, Croatia

Liner

Bonding

Restoratives (ORMOCER®s)

Restoratives (Composites)

Restoratives (Compomers)

Restoratives (Glass ionomer materials)

Alfacomp LC

Light-curing build-up and restorative material for the posterior tooth area



REF 1058 Syringe 4 g
REF 1059 Caps 16 × 0.25 g
Not available in Canada

Indications

Class I and II restorative treatment in the posterior region
Core build-up

Advantages

- Visible differentiation between restorations and tooth hard substance through grey colouring
- Simple application yet excellent physical properties
- High level of radiopacity
- Can be used with any light-curing dentine / enamel bonding agent

AlignerFlow LC

Fluorescent composite for aligner attachments



3 shades

REF 1526 Syringe 2 × 2 g A1, accessories
REF 1527 Syringe 2 × 2 g A2, accessories
REF 1528 Syringe 2 × 2 g A3, accessories
REF 2144 Application cannulae type 44, 100 pcs.
REF 2148 Application cannulae type 46, 100 pcs.
Not available in Canada

NEW

Indications

Fabrication of aligner attachments
Retention of aligners
Bonding of lingual retainers
Occlusal build-ups

Advantages

- Secure grinding and removal under UV-A light
- Precise application with perfect flow
- Light-curing through the transparent template
- Stable and abrasion resistant throughout the entire treatment period
- Pleasant aesthetic in tooth shades

Application



Application of AlignerFlow LC into the template



Finished attachments



Treatment completion: residues are visible under UV-A light

Polofil® Supra

Light-curing micro-hybrid restorative material

Indications

- For cavities classes I to V
- Reconstruction of traumatically affected anteriors
- Veneering of discoloured anteriors
- Splinting, locking of teeth

Advantages

- Combines the advantages of micro-filled and macro-filled composites
- Non-sticky, good packability
- Abrasion-proof and stable shades
- Low shrinkage
- Durable and resistant restorations
- Low water uptake



REF 1360	Set syringe 7 × 4 g (A1, A2, A3, A3.5, B2, B3, incisal), Vococid gel syringe 5 ml, Solobond M bottle 4 ml, accessories		
REF 1373	Set syringe 3 × 4 g (A2, A3, A3.5), Vococid bottle 3 ml, Solobond M bottle 4 ml, accessories		
Shade	Syringe 4 g	Shade	Syringe 4 g
A1	REF 1361	B2	REF 1365
A2	REF 1362	B3	REF 1366
A3	REF 1363	Incisal	REF 1368
A3.5	REF 1364		

Twinky Star® · Twinky Star® Flow

Coloured light-curing compomer restorative material with glitter effect



Indications

Fillings in deciduous teeth

Advantages

- Eight attractive colours with glitter effect
- Easy and quick application from Caps
- Outstanding polishability
- Based on the proven VOCO compomer technology
- Shade guide with original material
- Parents can more easily motivate children to see the dentist
- Children overcome their anxiety
- Target group marketing tools available



Coloured Twinky Star fillings in deciduous teeth



REF 1680	Set Caps 40 × 0.25 g (5 of each shade), shade guide
REF 1689	Shade guide
REF 9301	Dispenser – Caps
REF 2144	Application cannulae type 44, 100 pcs.
Shade	Caps 25 × 0.25 g
Gold	REF 1681
Silver	REF 1682
Blue	REF 1683
Pink	REF 1684
Green	REF 1685
Orange	REF 1686
Lemon	REF 1687
Berry	REF 1688
Twinky Star® Flow	
Shade	Syringe 2 g
Blue	REF 1693
Pink	REF 1694

REF 1693 and 1694 are not available in Canada

Liner

Bonding

Restoratives (ORMOCER®s)

Restoratives (Composites)

Restoratives (Compomers)

Restoratives (Glass ionomer materials)

Restoratives (Glass ionomer materials)

Page			class I	class II	class III	class V / cervical defects	base / liner / core build-ups	extended fissure sealing	restorations of deciduous teeth	temporary treatment	working time [min.]	setting time [min.]
Glass ionomer restorative materials												
44	IonoStar Plus capsule	Fast-setting glass ionomer restorative material	• ^{1,2}	• ²	•	•	•	•	•	•	1	2
45	IonoStar Molar capsule	Glass ionomer restorative material	• ^{1,2}	• ²	•	•	•	•	•	•	1,5	3 - 4
46	VOCO Ionofil Molar AC Quick capsule	Fast-setting glass ionomer restorative material	• ²	• ^{1,2}	•	•	•	•	•	•	1,5	2,5
46	VOCO Ionofil Molar handmix	Glass ionomer restorative material	• ²	• ^{1,2}	•	•	•	•	•	•	2 - 3	4 - 5
47	Aqua Ionofil Plus handmix	Water-mixable glass ionomer restorative material	• ²	•	•	•	•	•	•	•	2,5 - 3,5	5 - 6
Light-curing glass ionomer restorative materials												
17	Ionoseal syringe, tube	Glass ionomer composite cement					•	•				light-curing: 20 s / 1 mm
43	Ionolux capsule	Glass ionomer restorative material	• ³		•	•	•	•	•	•	> 2,5	light-curing: 20 s / 2 mm
43	Ionolux handmix	Glass ionomer restorative material	• ³		•	•	•	•	•	•	> 3	light-curing: 20 s / 2 mm

- ¹ non occlusion-bearing
² semi-permanent
³ small fillings

An overview of our composite restorative materials can be found on page 23.

Ionolux®

Light-curing glass ionomer restorative material

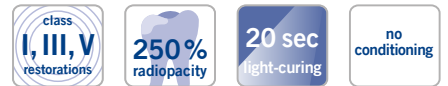


Indications

- Class III and V restorations, primarily cervical fillings and root caries
- Restoration of deciduous teeth
- Small class I fillings
- Temporary fillings
- Core build-up
- Linings

Advantages

- Excellent working time – setting time individually adjustable by light-curing
- No need for conditioning of dental hard tissue
- Immediately packable after placement in the cavity
- Does not stick to the instrument, easy to model
- Fill, polymerise and finish – no varnish required
- Fluoride release
- Radiopaque
- A suitable alternative to the CBF technique (composite bonded to flow) in deep cavities



REF 2115	Set application capsule 50 pcs. (10 × A1, 10 × A2, 30 × A3)
REF 2117	Application capsule 20 pcs. A1
REF 2118	Application capsule 20 pcs. A2
REF 2119	Application capsule 20 pcs. A3
REF 2120	Application capsule 20 pcs. A3.5
REF 2121	Application capsule 20 pcs. B1
REF 2122	Application capsule 150 pcs. A2
REF 2123	Application capsule 150 pcs. A3
REF 1990	Powder / liquid (12 g / 5 ml) A1, accessories
REF 1991	Powder / liquid (12 g / 5 ml) A2, accessories
REF 1992	Powder / liquid (12 g / 5 ml) A3, accessories
REF 2331	Applicator – AC type 1
REF 2303	Mixing pads 70 × 80 mm, with adhesive back, 4 pcs.

Clinical Cases



Case 1
Tooth 35 with cervical defect Tooth 35 immediately after treatment

Source: Dr. Isma Goltz, Bremen / Germany



Case 2
Teeth 16, 15 after excavation Subsequent treatment with Ionolux

Source: Prof. Hervé Tassery, PU-PH, Marseille / France

Liner

Bonding

Restoratives (ORMOCER®s)

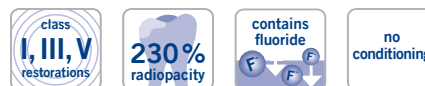
Restoratives (Composites)

Restoratives (Compomers)

Restoratives (Glass ionomer materials)

IonoStar® Plus

Fast-setting glass ionomer restorative material



REF 2540	Set application capsule 50 pcs. (10 × A2, 30 × A3, 10 × A3.5)
REF 2548	Application capsule 20 pcs. A1
REF 2543	Application capsule 20 pcs. A2
REF 2544	Application capsule 20 pcs. A3
REF 2545	Application capsule 20 pcs. A3.5
REF 2546	Application capsule 150 pcs. A2
REF 2547	Application capsule 150 pcs. A3
REF 2331	Applicator – AC type 1

Indications

- Restorations of non occlusion-bearing class I cavities
- Semi-permanent restorations of class I and II cavities
- Restorations of cervical lesions, class V cavities, root caries
- Restorations of class III cavities
- Restoration of deciduous teeth
- Base / liner
- Core build-up
- Temporary restorations
- Extended fissure sealing

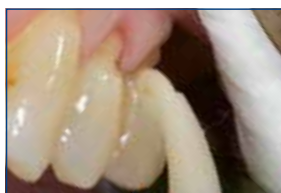
Advantages

- Perfect marginal adaptation and packability in one product, thanks to a change in viscosity during application
- Fast setting time of only 2 minutes from placement of the filling
- The first glass ionomer material with tooth-like fluorescence
- High level of fluoride release
- The new capsule design reaches smaller cavities and difficult-to access areas of the mouth
- High compressive strength and abrasion resistance

Clinical Case



Defects on teeth 24 and 25



Application of IonoStar Plus



Packable viscosity



Finishing



Polishing



Result

Source: Dr. Walter Denner, Fulda / Germany

Liner

Bonding

Restoratives (ORMOCERes)

Restoratives (Composites)

Restoratives (Compomers)

Restoratives (Glass ionomer materials)

IonoStar® Molar

Glass ionomer restorative material

Indications

- Restorations of non occlusion-bearing class I cavities
- Semi-permanent restorations of class I and II cavities
- Restorations of cervical lesions, class V cavities, root caries
- Restorations of class III cavities
- Restoration of deciduous teeth
- Base / liner
- Core build-up
- Temporary restorations

Advantages

- Variable mixing time for adjustment of consistency
- Perfect marginal adaptation and easy application
- Can be modelled immediately after insertion without sticking to the instrument
- In VOCO's new application capsule, easy activation without activator
- The new capsule design reaches smaller cavities and difficult-to-access areas in the mouth
- High compressive strength and abrasion resistance

Clinical Case



Initial situation tooth 26: secondary caries in the marginal areas and below the occlusal restorations



Cavity displaying deep caries; preparation including a tunnel to the mesial surface



Application of IonoStar Molar (A3)



Finishing with a fine diamond bur



Adhesive to seal and protect the surface of the glass ionomer



Finished filling after removal of the rubber dam

Source: Dr. Sanzio Marques, Passos / Brazil



REF 2520	Set application capsule 50 pcs. (10 × A1, 10 × A2, 30 × A3)
REF 2524	Application capsule 20 pcs. A1
REF 2525	Application capsule 20 pcs. A2
REF 2526	Application capsule 20 pcs. A3
REF 2532	Application capsule 150 pcs. A2
REF 2533	Application capsule 150 pcs. A3
REF 2331	Applicator – AC type 1

Liner

Bonding

Restoratives (ORMOCER®s)

Restoratives (Composites)

Restoratives (Compomers)

**Restoratives
(Glass ionomer materials)**

VOCO Ionofil® Molar AC Quick

Fast-setting glass ionomer restorative material



Indications

Restorations of class II cavities (not occlusion-bearing)

Temporary long-term treatment of class I and II cavities

Build-up fillings and linings

Core build-up

Restoration of deciduous teeth

Restoration of V-shaped defects and cervical enamel or root erosions including class V cavities

Advantages

- Very good packability
- Non-sticky consistency
- Very high abrasion resistance, compressive and transverse strength
- Stable fillings without marginal gaps
- Continuous high fluoride release
- Biocompatible
- Tooth-like aesthetic translucency
- A setting time of only 2.5 minutes makes VOCO Ionofil Molar AC Quick the perfect material for the treatment of children and impatient patients
- Good aesthetics in three shades

REF 1634	Application capsule 48 pcs. A2
REF 1632	Application capsule 48 pcs. A3
REF 1241	Final Varnish LC bottle 2 × 3 ml
REF 2331	Applicator – AC type 1
REF 9300	Activator – AC

VOCO Ionofil® Molar

Glass ionomer restorative material

Indications

Restorations of class II cavities (not occlusion-bearing)

Temporary long-term treatment of class I and II cavities

Build-up fillings and linings

Core build-up

Restoration of deciduous teeth

Restoration of V-shaped defects and cervical enamel or root erosions including class V cavities

Advantages

- Very good packability
- Non-sticky consistency
- Very high abrasion resistance, compressive and transverse strength
- Good adhesion to dentine and enamel
- Very durable fillings
- Continuous high fluoride release
- Radiopaque
- Biocompatible
- Tooth-like aesthetic translucency



REF 1442	Powder 15 g A2
REF 1443	Powder 15 g A3
REF 1448	Liquid 10 ml

Not available in Canada

Aqua Ionofil Plus

Water-mixable glass ionomer restorative material

Indications

- Restoration of deciduous teeth
- Restoration of V-shaped defects and cervical enamel or root erosions including class V cavities
- Restoration of cavities caused by carious lesions
- Restorations of class III cavities and small class I cavities
- Extended fissure sealing
- Build-up fillings and linings

Advantages

- Improved glass ionomer technology
- Good aesthetics
- Simply mixed with water
- No danger of overacidification
- Spreadable consistency
- Good marginal adaptation



REF 1511 Powder 15 g A3

Easy Glaze®

Nano-filled light-curing coating for surface sealing

Indications

- Surface sealing of provisional crowns and bridges, glass ionomer restorations and definitive composite restorations
- Protecting glass ionomer surfaces against the effects of moisture and dehydration immediately after placement
- Sealing glass ionomer liners / build-up restorations before taking impressions
- Sealing and protecting the adhesive interfaces between restoration and tooth structure

Advantages

- Glossy and aesthetic surfaces
- Easy to use
- Provides protection against discolouration

In combination with VOCO Ionofil® Molar and IonoStar®

- Protects against moisture and dehydration immediately after filling placement
- Tooth-like fluorescence
- Natural gloss



REF 1016 Bottle 5 ml, accessories
 REF 2245 Easy Brush, application brushes, 50 pcs.
 REF 2315 Mixing palettes, 20 pcs.
Not available in Canada



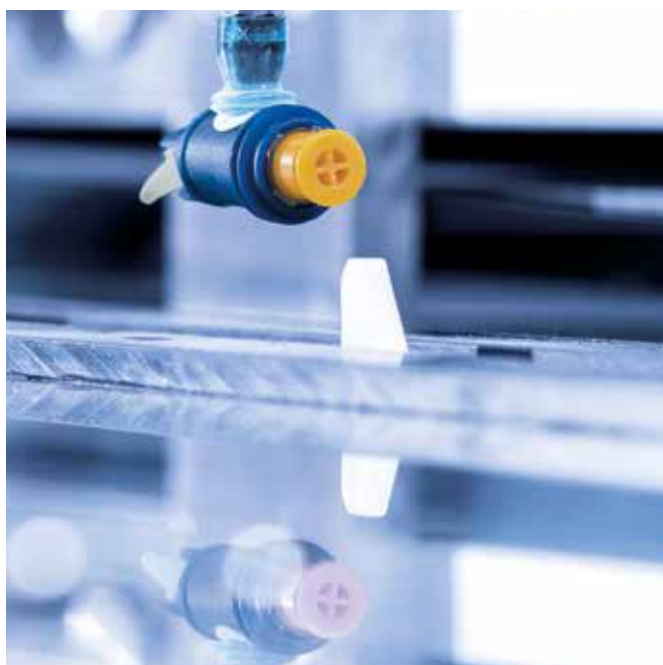
Indirect Restoration

Reliability. Practicality. Method.

Naturally, our portfolio offers you the full spectrum of indirect restoration materials: resin-reinforced glass ionomer cements, composite-based luting systems, highly aesthetic material for the fabrication of provisional crowns and bridges, glass fibre-reinforced composite posts and material for repairing ceramic restorations.

CAD / CAM users wishing to create crowns and bridges chairside will also find the ideal material basis in VOCO's blocks and discs.

For 3D printing work we recommend our perfectly coordinated materials for additive printing of objects.



V-Print® splint

Light-curing resin for the generative production of dental, therapeutic splints



Indications

- Therapeutic splints
- Auxiliary parts and functional parts for diagnostics
- Bleaching splints (home bleaching)

Advantages

- **Classified as MD IIa** – for safety and long-term therapy use
- **Biocompatible and flavourless** – for excellent customer acceptance
- **Transparent** – for hardly noticeable splints
- **High flexural strength** – for long-lasting objects
- **High precision** – a great fit for good wearing comfort



REF 6044 Bottle 1000 g clear

VOCO TRUSTED PARTNER

All print partners can be found here
www.voco.dental/3dprintingpartners

V-Print® splint comfort

Light-curing resin for the generative production of thermoflexible dental, therapeutic splints



Indications

- Therapeutic splints
- Auxiliary and functional parts for diagnostics
- Bleaching splints (home bleaching)
- Palatal plates

Advantages

- **Highly flexible and abrasion-resistant** – extremely fracture-resistant and durable
- **Thermoflexible and flavourless** – for excellent wearing comfort
- **Transparent** – for hardly visible splints
- **Low-odour and easy to polish** – for pleasant processing
- **Biocompatible and flavourless**
- **Classified as MD IIa**



REF 6126 Bottle 1000 g clear

VOCO TRUSTED PARTNER

All print partners can be found here
www.voco.dental/3dprintingpartners

CAD / CAM material

Luting

Core build-up

Temporaries

Denture relining

Impression

Repair

V-Print® SG

Light-curing resin for the generative production of dental drilling templates

Indications

Dental drilling templates

Medical device class IIa –
approved for wound
contact

Advantages

- **Classified as MD IIa** – for optimal safety
- **High customer acceptance** – flavourless and odourless
- **Optimum patient safety** – can be steam sterilised at 134° C for 5 minutes before use
- **Dimensionally stable** – perfect fit even after steam sterilisation
- **Biocompatible** – that goes without saying



REF 6043 Bottle 1000 g clear

VOCO TRUSTED PARTNER

All print partners can be found here
www.voco.dental/3dprintingpartners

V-Print® model fast

Light-curing resin for the generative production of fast printable models, especially for the dental thermoforming technique

Indications

Dental models

Advantages

- **Saves time** – for rapid printing in high layer thicknesses with no loss of quality
- **Suitable for thermoforming technique** – temperature-resistant as the basis for fabrication of aligner and retainer splints
- **High strength and minimum wastage** – the high strength allows material-efficient hollowing of the models



REF 6125 Bottle 1000 g blue

VOCO TRUSTED PARTNER

All print partners can be found here
www.voco.dental/3dprintingpartners

V-Print® model 2.0

Light-curing resin for the generative production of dental models

Indications

Dental working and presentation models

Advantages

- **Fast and precise** – optimal fit also with layer thicknesses of 100 µm
- **Precisely grindable** – no unwanted changes on the workpiece (e.g. due to instrumental heat input)
- **Scratch-resistant surface** – high hardness enables fitting without deformation
- **Suitable for thermoforming technique** – precise working, aligner or retainer models from one material without changing the vat



REF 6128 Bottle 1000 g beige

V-Print® Try-In

Light-curing resin for the generative production of try-ins for prosthetics

Indications

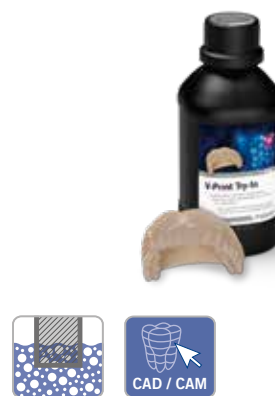
Try-ins for full and partial dentures
Transfer and grinding templates
Correction and occlusal impressions

Advantages

- **Advance checks** – verifying and, if necessary, adapting the fit, occlusion, function, phonation and aesthetics before the permanent denture is fabricated



All print partners can be found here
www.voco.dental/3dprintingpartners



REF 6049 Bottle 1000 g beige

CAD / CAM material

Luting

V-Print® tray

Light-curing resin for the generative production of individual trays, base plates and occlusal registrations

Indications

Individual impression and function trays
Bases for bite templates and wax assemblies for full dentures
Occlusal registrations

Advantages

- **Saves time** – printable in high layer thicknesses (up to 200 µm)
- **Distortion-free impressions** – thanks to very strong material
- **Universal** – can be used with all types of impression material
- **Fast and efficient** – object printing including shaping of margins, retention elements and recesses for implant impressions



All print partners can be found here
www.voco.dental/3dprintingpartners



REF 6047 Bottle 1000 g blue

Core build-up

Temporaries

V-Print® cast

Light-curing resin for the generative production of burn-out objects for casting and pressing processes

Speedcasting and conventional heating

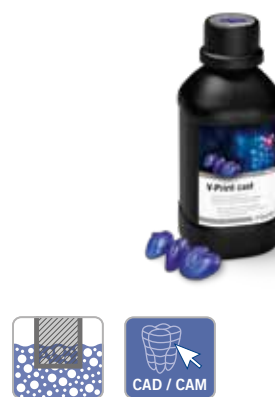
Indications

Production of objects which can be burned out without leaving any residues for casting processes and press ceramics

Advantages

- **Reproducible** – simple duplication before casting
- **Quick finishing** – precision-printed objects give high quality of reproduction

- **High dimensional stability and edge strength** – reliable checking of the occlusion and lateral movements
- **Finishing at an early stage** – instrument-friendly finishing of objects even in the green state
- **Excellent compatibility** – can be used with commercially available, phosphatobonded investment materials
- **Restorations free of impurities** – V-Print cast burns out without residues



REF 6045 Bottle 1000 g blue
Not available in Canada

Denture relining

Impression

Repair

V-Print® c&b temp

Light-curing resin for the generative production of highly aesthetic temporaries / long-term temporaries

NEW

Indications

Long-term temporaries like crowns, bridges and mock-ups

Advantages

- **High-filled printing material** – especially for long-term application
- **Excellent physical properties:**
 - high flexural strength and moduls of elasticity for stable temporaries
 - high abrasion resistance for long wearing time

- low water absorption and solubility for mechanical stability
- discolouration resistant – no discolouration with long wearing time

- **Natural fluorescence** – for high aesthetic demands
- **Easy to process and polish**
- **Composite printing material** – quick to characterise or adapt



REF 6897	Bottle 500 g A1
REF 6898	Bottle 500 g A2
REF 6899	Bottle 500 g A3

Not available in Canada



V-Print® dentbase

Light-curing resin for the generative production of denture bases for removable dentures

Indications

Removable denture bases

Advantages

- **Classified as MD IIa** – for safety and long-term use
- **Highly aesthetic** – with natural gingiva colour
- **High wearing comfort** – thanks to precise, custom-fit fabrication
- **Compatible** – with commercially available lining materials
- **Safe removal from the build platform** – thanks to high green strength
- **Optimal customer acceptance** – flavourless and odourless
- **Biocompatible** – that goes without saying



REF 6048	Bottle 1000 g pink
----------	--------------------



Structur CAD

CAD / CAM composite for temporary restorations

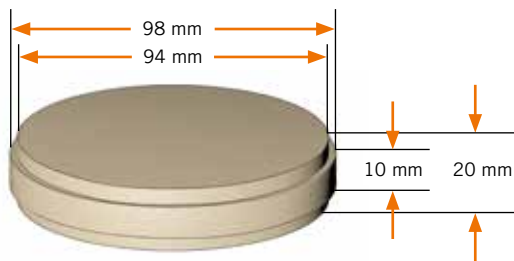
Indications

- Temporary bridges spanning up to two pontics
- Temporary abutment crowns
- Temporary crowns

Advantages

- Fast and efficient CAD / CAM production of precision-fit temporary restorations
- Highest quality and aesthetics for prolonged, safe wear – especially suitable for long-term provisional and semi-permanent restorations
- Excellent edge stability
- Effortless intraoral as well as extraoral polishing and Individualisation
- No need to use an MMA primer

Size disc



Size block



Clinical case



Unsatisfactory initial situation



Initial situation – close-up



CAD / CAM bridge on the model



Structur CAD after insertion

Source: Dr. Felipe Araujo, Brazil



Block	
REF 6076	Block 5 x No. 40L A1
REF 6077	Block 5 x No. 40L A2
REF 6078	Block 5 x No. 40L A3
Disc ø 98 mm	
REF 6071	Disc A1 20 mm
REF 6072	Disc A2 20 mm
REF 6073	Disc A3 20 mm

VOCO TRUSTED PARTNER

The list of devices is continually extended and can be found at www.voco.dental/devicesstructurcad

CAD / CAM material

Luting

Core build-up

Temporaries

Denture relining

Impression

Repair

Grandio® blocs

Nano-ceramic hybrid CAD / CAM blocs

Also available for PlanMill®



Indications

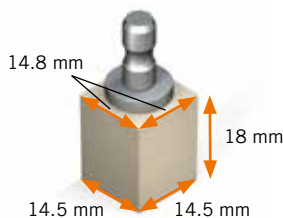
Crowns, inlays, onlays, veneers
Implant supported crowns

Advantages

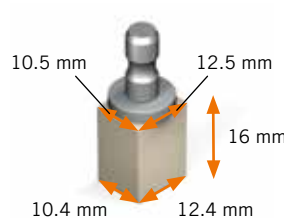
- Highest filler content (86 % w/w)
- Resembles natural teeth perfectly
- Excellent physical values for flexural strength and abrasion
- No firing required
- Can be processed using any conventional milling unit
- Can be polished and repaired optimally
- Ideal for milling even in cases with thin edges
- Based on the nano-hybrid technology

Sizes blocs

No. 14L



No. 12



Universal		
Low translucent (LT)	5 x No. 12	5 x No. 14L
A1 LT	REF 6003	REF 6018
A2 LT	REF 6004	REF 6019
A3 LT	REF 6005	REF 6020
A3.5 LT	REF 6006	REF 6021
B1 LT	REF 6007	REF 6022
C2 LT	REF 6008	REF 6023
BL LT	REF 6009	REF 6024
High translucent (HT)	5 x No. 12	5 x No. 14L
A1 HT	REF 6012	REF 6027
A2 HT	REF 6013	REF 6028
A3 HT	REF 6014	REF 6029
A3.5 HT	REF 6015	REF 6030
PlanMill®		
Low translucent (LT)	5 x No. 12	5 x No. 14L
A1 LT	REF 6153	REF 6168
A2 LT	REF 6154	REF 6169
A3 LT	REF 6155	REF 6170
A3.5 LT	REF 6156	REF 6171
B1 LT	REF 6157	REF 6172
C2 LT	REF 6158	REF 6173
BL LT	REF 6159	REF 6174
High translucent (HT)	5 x No. 12	5 x No. 14L
A1 HT	REF 6162	REF 6177
A2 HT	REF 6163	REF 6178
A3 HT	REF 6164	REF 6179
A3.5 HT	REF 6165	REF 6180

Clinical Case



Initial situation



Prepared cores



View after 6 months



The list of devices is continually extended and can be found at www.voco.dental/devicesgrandio

Source: Prof. Breno de Mont'Alverne, Brazil

Grandio® disc

Nano-ceramic hybrid CAD / CAM disc



Also available as multicolor

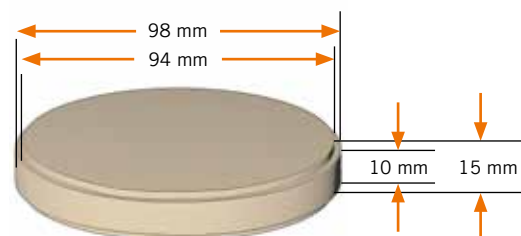
Indications

Crowns, inlays, onlays, veneers
Implant supported crowns

Advantages

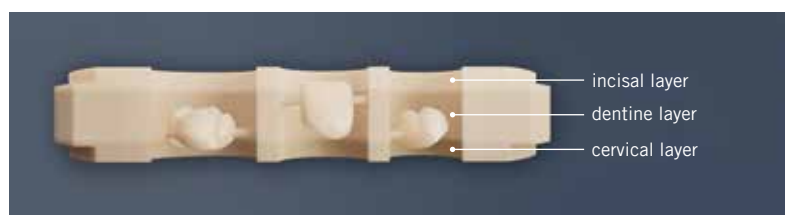
- Highest filler content (86 % w/w)
- Resembles natural teeth perfectly
- Excellent physical values for flexural strength and abrasion
- No firing required
- Highly aesthetic due to multicolor shades - ideal for the anterior region
- Can be processed using any conventional milling unit
- Can be polished and repaired optimally
- Ideal for milling even in cases with thin edges
- Based on the nano-hybrid technology

Size disc



Invisible Layer Technology – the natural tooth gradient with only three layers in the Grandio disc multicolor

The restoration material is divided into three layers: one for the incisal area, one for the basic tooth colour (dentine layer) and one for the cervical area. The colouring of the Grandio disc multicolor makes the restoration look very vital, which is achieved with just these three layers due to the material properties.



Grandio® disc	
Low translucent (LT)	1 x 15 mm, ø 98 mm
A1 LT	REF 6050
A2 LT	REF 6051
A3 LT	REF 6052
A3.5 LT	REF 6053
B1 LT	REF 6054
C2 LT	REF 6055
BL LT	REF 6056
High translucent (HT)	1 x 15 mm, ø 98 mm
A1 HT	REF 6057
A2 HT	REF 6058
A3 HT	REF 6059
A3.5 HT	REF 6060
Grandio® disc multicolor	
Basic tooth colour	1 x 15 mm, ø 98 mm
A1	REF 6216
A2	REF 6217
A3	REF 6218
A3.5	REF 6219
B1	REF 6220
C2	REF 6221

CAD / CAM material

Luting

Core build-up

Temporaries

Denture relling

Impression

Repair

CediTEC® DT

CAD / CAM composite for denture teeth



Indications

Prosthetic teeth and tooth sections up to complete dental arches for removable dentures

Advantages

- Cured composite for high quality and durable denture teeth
- Translucent shade and high fluorescence for natural aesthetics
- Production of individual, accurately fitting denture teeth, reproducible at any time
- Effortless polishing for a natural gloss
- Easy to individualize without using an MMA primer
- Aesthetic, precise, individual – dentures made with the CediTEC / V-Print dentbase system

REF 6085	Disc A1 20 mm, ø 98 mm
REF 6086	Disc A2 20 mm, ø 98 mm
REF 6087	Disc A3 20 mm, ø 98 mm
REF 6088	Disc BL 20 mm, ø 98 mm

VOCO TRUSTED PARTNER

The list of devices is continually extended and can be found at www.voco.dental/devicesceditecdt

CediTEC®

Luting system for denture teeth in denture bases



auto mix

Indications

Luting of prefabricated prosthetic teeth and CAD / CAM-produced individual teeth and tooth sections in CAD / CAM-produced denture bases

Luting of prosthetic teeth in the scope of a repair or extension

Advantages

- Error- and bubble-free mixing
- Only the material quantity actually required is mixed
- Easy and direct application
- Subsequent additions possible
- Also usable for other systems and conventional PMMA
- Aesthetic, precise, individual – dentures made with the CediTEC / V-Print dentbase system

REF 6082	Set cartridge 80 g CediTEC Adhesive, bottle 4 ml CediTEC Primer, accessories
REF 2202	Mixing tips type 20, 50 pcs.
REF 2245	Easy Brush, application brushes, 50 pcs.

CediTEC® DB

High-impact PMMA for the fabrication of denture bases for removable dentures

Indications

Fabrication of denture bases for removable dentures

Advantages

- PMMA with high impact resistance and strength for a long time wearing period
- High-quality denture bases, reproducible at any time
- Three shades for an aesthetic result
- Very good polishability – individualisations possible at any time
- Aesthetic, precise, individual – dentures with the CediTEC System

Alternative:

V-Print dentbase for generative production of denture bases for removable dentures (see page 52)

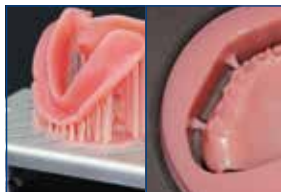


REF 6195	Disc pink 30 mm, ø 98 mm
REF 6196	Disc dark-pink 30 mm, ø 98 mm
REF 6197	Disc orange-pink 30 mm, ø 98 mm
<i>Not available in Canada</i>	

CAD / CAM system for individual dentures



Detached milled dental arches from the CediTEC DT disc



3D-printed denture base made of V-Print dentbase on the build area or the milling material CediTEC DB



Denture bases and teeth directly after fabrication, prepared for luting



Apply CediTEC Adhesive into the dental cavities and insert single teeth and/or tooth segments directly



Finished and individualised full denture



Front view

CAD / CAM material

Luting

Core build-up

Temporaries

Denture relining

Impression

Repair

Luting

Page	Type	presentation	Inlays / onlays			Superstructures						Maryland bridges	ve-neers	posts			attachments ⁴	orthodontic bands	steel crowns
						crowns, bridges			Abutment crowns / other (also extraorally)										
Luting material																			
59	Bifix SE	composite	QuickMix syringe	•	•	•	•	•	•	•	•	•	•	•	•	•	•	•	•
60	Bifix QM	composite	QuickMix syringe	•	•	•	•	•	•	•	•	•	•	•	•	•	•	•	•
60	Bifix Hybrid Abutment	composite	QuickMix syringe	•	•	• ³	• ³	• ³	• ³	• ³	• ³	•	•	•	•	•	•	•	•
61	Meron Plus QM	resin reinforced GIC ¹	QuickMix syringe	•	•	•	•	•	•	•	•	•	•	•	•	•	•	•	•
62	Meron	GIC ¹	capsule	•	• ³	•	• ³	• ³	• ³	• ³	•	•	•	•	•	•	•	•	•
62	Meron	GIC ¹	handmix	•	• ³	•	• ³	• ³	• ³	• ³	•	•	•	•	•	•	•	•	•
62	Aqua Meron	GIC ¹	handmix	•	•	•	•	•	•	•	•	•	•	•	•	•	•	•	•
63	Quick Up	composite	QuickMix syringe																•
66	Rebilda DC	composite	QuickMix syringe / cartridge																•
67	Grandio Core Dual Cure	composite	QuickMix syringe																•

¹ glass ionomer luting cement
² silicate / zirconium dioxide / aluminium oxide ceramics
³ also on implant abutments
⁴ ball, Locator®, telescope retention elements, as well as other holding elements

Locator® is not a registered trademark of VOOCO GmbH.

Bifix® SE

Dual-curing self-adhesive composite-based luting system



Indications

Definitive luting of inlays, onlays, crowns and bridges (not Maryland bridges) made from ceramic, zirconium dioxide, composites and metal

Definitive luting of metal, ceramic, zirconium dioxide and fibre-reinforced posts

Advantages

- Secure adhesion to tooth and restoration
- Fast working: no etching, no bonding
- Odourless
- Easy handling
- Long-term durability
- Simple removal of excess material
- Minimal film thickness of 10 µm for precisely fitted luting without elevating the bite
- Also suitable for zirconium dioxide
- Endo-mixing tips in each package – for the most precise application even in the root canal

Application



1 - 2 sec.



180 - 240 sec.



Easy excess removal during gel-phase. Tack-cure Bifix SE using the curing light for 1 - 2 seconds per surface. The excess gel-like material is easily removeable, e.g. with a scaler.



REF 1784	Set QuickMix syringe 3 × 5 g (universal, transparent, white-opaque), accessories
REF 1785	QuickMix syringe 5 g universal, accessories
REF 1786	QuickMix syringe 5 g transparent, accessories
REF 1787	QuickMix syringe 5 g white-opaque, accessories
REF 2194	Mixing tips type 14, 50 pcs.
REF 2195	Mixing tips type 15 (with intraoral tips type 1), 50 pcs.

CAD / CAM material

Luting

Core build-up

Temporaries

Denture relining

Impression

Repair

Bifix® QM

Dual-curing universal composite-based luting system



Also for
zirconium dioxide
luting



Indications

Adhesive luting of inlays, onlays, veneers, crowns, partial crowns, bridges, root posts and adhesive bridges (Maryland bridges)

Advantages

- For all materials (metal, composite inlays and ceramic, also zirconium dioxide)
- Bubble-free perfect mixing
- Direct application
- Excellent adhesion to dentine, enamel and to metals
- Special one-step Ceramic Bond for optimal adhesion to porcelain
- Radiopaque
- Available in three shades
- Available as an all-in-one set

REF 1217	Set QuickMix syringe 10 g U (universal), Futurabond DC bottle 4 ml each of liquid 1 and 2, Ceramic Bond bottle 5 ml, accessories
REF 1218	QuickMix syringe 10 g universal, accessories
REF 1219	QuickMix syringe 10 g transparent, accessories
REF 1759	QuickMix syringe 10 g white-opaque, accessories
REF 2261	Dispenser – QuickMix

For further accessories see p. 89/90

Bifix® Hybrid Abutment

Universal, dual-curing luting composite for intraoral and extraoral application

With highly
opaque shades



Indications

Permanent extraoral and intraoral luting of superstructures (incl. mesostructures) made of metal, ceramics, zirconium dioxide and polymers (composite, hybrid ceramics or PMMA) on

- prefabricated adhesive/titanium bases (extraorally only)
- customised titanium and zirconium dioxide bases (both extraorally and intraorally)
- dental hard tissue

Advantages

- All-in-one – permanent luting of all known dental materials
- Highest flexibility – intraoral application in the practice and extraoral in the laboratory
- High aesthetic – the perfect masking of dark substrates with highly opaque shades
- With Try-In pastes – precise shade simulation for hybrid abutments, abutment crowns and core treatments

REF 2410	Implant Set – QuickMix syringe 10 g (universal HO), Try-In syringe 2.5 g, Ceramic Bond bottle 5 ml, Futurabond U <i>SingleDose</i> 5 pcs., accessories
REF 2411	QuickMix syringe 10 g (universal HO), Try-In syringe 2.5 g, accessories
REF 2412	QuickMix syringe 10 g (white HO), Try-In syringe 2.5 g, accessories
REF 2413	QuickMix syringe 10 g (translucent), Try-In syringe 2.5 g, accessories
REF 2261	Dispenser – QuickMix

For further accessories see p. 89/90
Not available in Canada

Ceramic Bond

Coupling agent for porcelain (incl. zirconium dioxide) and composite

Also for
zirconium dioxide
luting

Indications

Ceramic Bond is used as a coupling agent to achieve an optimal bond strength between indirect restorations made of either silicate ceramics, aluminium oxide, zirconium dioxide, metal or composite, as well as glass fibre-reinforced composite posts, on the one side and methacrylate-based luting composites on the other side.

Advantages

- Creates ideal conditions for a durable bond between indirect restoration and luting composite
- No mixing required

Advantages of the *SingleDose*

- Easy, quick and hygienic
- No additional devices required
- No spilling in any position



REF 1106	Bottle 5 ml
REF 1107	<i>SingleDose</i> 50 pcs., accessories

Meron Plus QM

Resin reinforced glass ionomer luting cement



Indications

Luting of

- metal-based inlays, onlays, crowns and bridges
- high-strength (e.g., zirconium dioxide-based or lithium disilicates, etc.) all-ceramic inlays, onlays, crowns and bridges
- metal, ceramic and glass fibre-reinforced posts
- orthodontic bands and aids

Advantages

- Excellent adhesion to the dental structure
- Precise marginal fit
- Moisture and acid resistant
- Self-adhesive: secure and quick bonding without primer or conditioner
- Excess material can be removed without waiting thanks to optional short-time light polymerisation
- QuickMix syringe ensures optimal application and a reliable mixing ratio



REF 1727	QuickMix syringe 8.5 g, accessories
REF 1728	QuickMix syringe 3 × 8.5 g, accessories
REF 2261	Dispenser – QuickMix
REF 2189	Mixing tips type 10, 50 pcs.

Meron (Application capsule)

Radiopaque glass ionomer luting cement



REF 1242	Application capsule 50 pcs.
REF 1243	Application capsule 150 pcs.
REF 2331	Applicator – AC type 1
<i>Not available in Canada</i>	

Indications

Luting of

- metal-based crowns, bridges, inlays and onlays
- high-strength all-ceramic crowns and bridges
- metal-based and high-strength all-ceramic crowns and bridges on implant abutments
- metal root posts or indirect metal post core build-ups
- prefabricated steel crowns
- orthodontic bands

Advantages

- Sizeable amount available per capsule – also suitable for large restorations
- Very good wetting behaviour
- Stable
- Low film thickness
- High level of translucency for aesthetic results
- Simple removal of excess material
- Continuous release of fluoride
- No known postoperative sensitivities

Meron

Glass ionomer luting cement

Indications

Luting of crowns, bridges, inlays, onlays, pins, posts and orthodontic bands

Advantages

- Low solubility in the mouth
- Low acidity
- Biocompatible
- Easy application



REF 1086	Set powder / liquid (35 g / 15 ml)
REF 1090	Set mini powder / liquid (15 g / 7 ml)
<i>Not available in Canada</i>	

Aqua Meron

Water-mixable glass ionomer luting cement

Indications

Luting of crowns, bridges, inlays, onlays, pins, posts and orthodontic bands

Advantages

- Good flowability
- Low solubility in the mouth
- Low acid stress
- Biocompatible



REF 1172	Powder 35 g with dropping bottle
----------	----------------------------------

Quick Up®

Self-curing luting material for attachments and secondary denture parts



Indications

Gingiva-coloured composite for luting attachments, such as ball, Locator® and telescope retention elements in prostheses with acrylic bases

Reluting secondary elements in prostheses with acrylic bases, e.g. connecting bars

Advantages

- Very simple chairside use
- High strength values
- Complete set for immediate use, including checking and block out material for primary structures that require protection, e.g. implants
- Ideal combination of self-curing luting material and light-curing correction material

Locator® is not a registered trademark of VOCO GmbH.



REF 1625	Set QuickMix syringe 7.5 g, Quick Up LC syringe 2 g, adhesive bottle 4 ml, Fit Test C & B QuickMix syringe 5 ml, accessories
REF 1626	QuickMix syringe 7.5 g, accessories
REF 1627	Quick Up LC syringe 2 g, accessories
REF 1628	Adhesive bottle 4 ml, accessories
REF 2261	Dispenser – QuickMix
REF 2189	Mixing tips type 10, 50 pcs.
REF 2144	Application cannulae type 44, 100 pcs.
REF 2247	Single Tim, application brushes, 100 pcs.
REF 2315	Mixing palettes, 20 pcs.

BrackFix®

Light-curing bracket bonding system



Indications

Direct bonding of orthodontic metal and ceramic brackets

Advantages

- Optimal consistency of the adhesive: stable positioning of the bracket on the surface of the tooth
- Provides secure adhesion for metal and ceramic brackets
- Light-curing: long working time
- Can be exposed to loads immediately after polymerisation
- Fluorescent: allows for quick and gentle elimination of adhesive residues after bracket removal



REF 1205	Set adhesive syringe 2 x 4 g, Primer bottle 6 ml, accessories
REF 1206	Set SE adhesive syringe 2 x 4 g, primer SE <i>SingleDose</i> 40 pcs., accessories
REF 1207	Adhesive syringe 2 x 4 g
REF 1208	Primer bottle 6 ml
REF 1209	Primer SE <i>SingleDose</i> 50 pcs., accessories
REF 2247	Single Tim, application brushes, 100 pcs.
REF 2315	Mixing palettes, 20 pcs.

CAD / CAM material

Luting

Core build-up

Temporaries

Denture relining

Impression

Repair

Rebilda® Post

Glass fibre-reinforced composite post



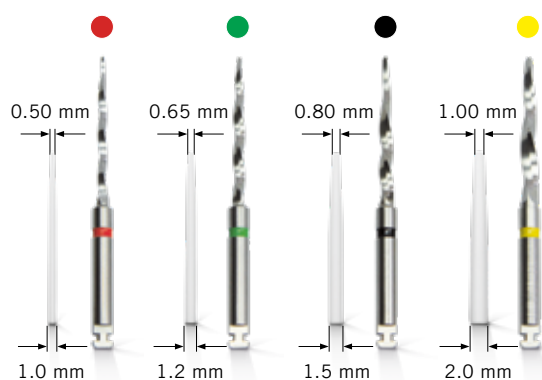
Indications

Endodontic post build-up for support and anchoring of coronal restoration in situations with insufficient tooth substance

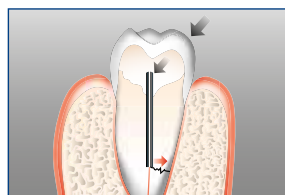
Advantages

- Dentine-like elasticity behaviour, high transverse strength
- High level of radiopacity (350 %Al)
- Anatomical shape
- Adhesive luting
- Removable
- All materials in the set match each other
- Post insertion and core-build-up in one step
- **Futurabond® DC · Futurabond® U**
 - safe self-cure
 - high adhesion without additional etching
- **Rebilda® DC**
 - suitable for post luting
 - cuts like dentine, very good physical properties
 - low setting temperature

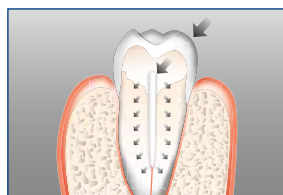
REF 1770	Set 5 posts each of (ø 1.2 mm, ø 1.5 mm, ø 2.0 mm), 1 drill each of (ø 1.2 mm, ø 1.5 mm, ø 2.0 mm)
REF 1771	Set 5 posts each of (ø 1.2 mm, ø 1.5 mm, ø 2.0 mm), 1 drill each of (ø 1.2 mm, ø 1.5 mm, ø 2.0 mm), Ceramic Bond bottle 5 ml, Futurabond DC <i>SingleDose</i> 15 pcs., Rebilda DC QuickMix syringe 10 g dentine, accessories
REF 1782	Set II 5 posts each of (ø 1.0 mm, ø 1.2 mm, ø 1.5 mm, ø 2.0 mm), 1 drill each of (ø 1.0 mm, ø 1.2 mm, ø 1.5 mm, ø 2.0 mm), Ceramic Bond bottle 5 ml, Futurabond U <i>SingleDose</i> 20 pcs., Rebilda DC QuickMix syringe 10 g dentine, accessories
REF 1775	Post 10 (ø 1.0 mm), 5 pcs.
REF 1772	Post 12 (ø 1.2 mm), 5 pcs.
REF 1773	Post 15 (ø 1.5 mm), 5 pcs.
REF 1774	Post 20 (ø 2.0 mm), 5 pcs.
REF 1780	Drill 10 (ø 1.0 mm), 1 pcs.
REF 1777	Drill 12 (ø 1.2 mm), 1 pcs.
REF 1778	Drill 15 (ø 1.5 mm), 1 pcs.
REF 1779	Drill 20 (ø 2.0 mm), 1 pcs.



Posts illustrations are not the actual size.



Metal post – root fractures



Rebilda Post – dentine-like E-modulus

Rebilda® Post GT

Bundled glass fibre-reinforced composite post



Indications

Core build-up restorations with root posts for endodontically treated teeth

Advantages

- Optimal restoration of mechanically prepared root canals
- Simple application
- Saves time and reduces the extent of tooth substance removal, as there is no need for preparation of the post site, which weakens the tooth less than conventional posts
- Optimal adaptation to all canal morphologies and geometries
- All materials in the set are perfectly coordinated
- **Futurabond® U**
 - safe self-cure
 - high adhesion without additional etching
- **Rebilda® DC**
 - suitable for post luting
 - cuts like dentine, very good physical properties
 - low setting temperature

REF 1972	Set 5 posts each of (~ ø 0.8 mm, ~ ø 1.0 mm, ~ ø 1.2 mm, ~ ø 1.4 mm), Ceramic Bond bottle 5 ml, Futurabond U SingleDose 20 pcs., Rebilda DC QuickMix syringe 10 g dentine, accessories
REF 1973	Post 4 (~ ø 0.8 mm), 5 pcs.
REF 1974	Post 6 (~ ø 1.0 mm), 5 pcs.
REF 1975	Post 9 (~ ø 1.2 mm), 5 pcs.
REF 1976	Post 12 (~ ø 1.4 mm), 5 pcs.

Application



CAD / CAM material

Luting

Core build-up

Temporaries

Denture relining

Impression

Repair

Rebilda® DC

Dual-curing flowable core build-up and post luting system

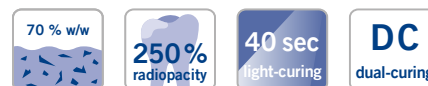


Indications

Adhesive core build-up on vital and non-vital teeth
Luting of fibre-reinforced resin posts

Advantages

- Light-curing for time-saving application
- Additional chemical curing for reliable processing
- Available in 10 g QuickMix syringes and 50 g cartridge
- In three shades: *blue* for easy identification of preparation margins, *dentine* for aesthetic reasons, *white* as an aesthetic contrast to dentine
- Optimised small mixing tips save material
- Low heat development even in bulk application
- Flowable – packing is obsolete
- Safe adhesion with system bond
- Easy access of posterior areas with intraoral tips



REF 1395	Set cartridge 50 g dentine, Futurabond DC bottle each of 4 ml liquid 1 and 2, dispenser type 3, accessories
REF 1396	Cartridge 50 g dentine, accessories
REF 1397	Cartridge 50 g blue, accessories
REF 1398	Cartridge 50 g white, accessories
REF 1402	Set QuickMix syringe 10 g dentine, Futurabond DC bottle each of 4 ml liquid 1 and 2, accessories
REF 1403	QuickMix syringe 10 g dentine, accessories
REF 1404	QuickMix syringe 10 g blue, accessories
REF 1405	QuickMix syringe 10 g white, accessories
REF 2259	Dispenser – type 3
REF 2261	Dispenser – QuickMix
REF 2191	Mixing tips type 11 for QuickMix syringe, 50 pcs.
REF 2139	Intraoral tips type 1 for QuickMix syringe, 50 pcs., to be used in the root canal
REF 2142	Intraoral tips type 4 for QuickMix syringe, 50 pcs.
REF 2192	Mixing tips type 12 for cartridge, 50 pcs.
REF 2141	Intraoral tips type 3 for cartridge, 50 pcs.
REF 2199	Mixing tips type 19 for cartridge, bendable, 30 pcs.

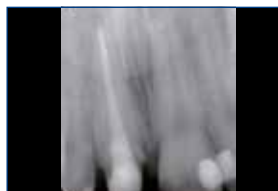
Clinical Case



Tooth 11 requiring therapy



Canal opening with root-canal filling



Root-canal filling with marginal integrity, up to the apex



Rebilda Post inserted into the root canal



Prepared build-up – ready for impression

Source: Dr. Walter Denner, Fulda / Germany

CAD / CAM material

Luting

Core build-up

Temporaries

Denture relining

Impression

Repair

Grandio® Core Dual Cure

Flowable dual-curing nano-hybrid core build-up material

Indications

Core build-up, for vital as well as non-vital teeth
Luting of root posts

Advantages

- Outstanding physical properties for durable core build-ups
- Filler content of 77 % w/w
- Nano-hybrid technology
- In three shades: dentine, blue and white
- QuickMix syringe to ensure optimal application and consistent mixing ratio
- Flowable
- With intraoral tips type 4 for convenient application



nanohybrid technology	77 % w/w	365% radiopacity	40 sec light-curing
DC dual-curing	auto mix	3 shades	

REF 1910	QuickMix syringe 10 g dentine, accessories
REF 1911	QuickMix syringe 10 g blue, accessories
REF 1912	QuickMix syringe 10 g white, accessories
REF 2261	Dispenser – QuickMix
REF 2191	Mixing tips type 11 for QuickMix syringe, 50 pcs.
REF 2142	Intraoral tips type 4 for QuickMix syringe, 50 pcs.

Clinical Case



High loss of substance in the anterior area after excavation



Condition after build-up with Grandio Core Dual Cure, ready for impression



Final restoration

Source: Dr. Walter Denner, Fulda / Germany

CAD / CAM material

Luting

Core build-up

Temporaries

Denture relining

Impression

Repair

Structur 3

Self-curing composite material for the fabrication of provisional crowns and bridges

GLOSS WITHOUT POLISHING!



nanohybrid technology

SC
self-curing

auto mix

no polishing

temporary

6
shades

Indications

Fabrication of temporary crowns, bridges, inlays, onlays, partial crowns, veneers and temporary posts

Fabrication of long-term temporaries

Lining of pre-fabricated temporary crowns made from composite materials, polycarbonate or metal

Advantages

- **Processing**
 - quick, simple and reliable thanks to the 1:1 cartridge system
 - short setting time
 - elastic phase allows simple removal from the prepared tooth
 - gloss without polishing – only requires removal of the inhibition layer
- **Aesthetics**
 - natural gloss and fluorescence
 - available in 6 shades
- **Durability**
 - high compressive strength
 - excellent fracture resistance

REF 2500	Set cartridge 50 ml A2, dispenser type 2, accessories	
REF 2158	Dispenser – type 2	
REF 2261	Dispenser – QuickMix	
REF 2185	Mixing tips type 6 for cartridge, 50 pcs.	
REF 2189	Mixing tips type 10 for QuickMix syringe, 50 pcs.	
	Cartridge 50 ml, mixing tips type 6	Cartridge 5 × 50 ml, mixing tips type 6
A1	REF 2503	–
A2	REF 2504	REF 2512
A3	REF 2505	REF 2513
A3.5	REF 2506	–
B1	REF 2507	–
BL	REF 2510	–
	QuickMix syringe 5 ml, mixing tips type 10	
A1	REF 2515	
A2	REF 2516	
A3	REF 2517	

Clinical Case



Initial situation



Prepared cores



Finished temporary bridge



Appealing result

Source: Dr. Walter Denner, Fulda / Germany

CAD / CAM material

Luting

Core build-up

Temporaries

Denture relining

Impression

Repair

Structur 2

Self-curing composite material for the fabrication of provisional crowns and bridges



Indications

Fabrication of aesthetic temporary crowns, bridges, inlays and onlays

Advantages

- Simple and fast working steps
- Less than 1 minute setting time in the mouth
- Easy to shape and polish
- Available in 7 shades for natural aesthetics
- Long-lasting temporaries
- High stability of shape and shade
- Very economical due to minimal material loss
- Natural fluorescence

SC
self-curing

auto mix

temporary

7 shades

REF 1478	Set cartridge 75 g A3, dispenser type 2, accessories	
REF 1499	Set cartridge 75 g A2, dispenser type 2, accessories	
REF 2158	Dispenser – type 2	
REF 2261	Dispenser – QuickMix	
REF 2185	Mixing tips type 6 for cartridge, 50 pcs.	
REF 2189	Mixing tips type 10 for QuickMix syringe, 50 pcs.	
	Cartridge 75 g, mixing tips type 6	Cartridge 5 x 75 g, mixing tips type 6
A1	REF 1479	–
A2	REF 1480	REF 1492
A3	REF 1481	REF 1491
A3.5	REF 1490	–
B1	REF 1482	–
C2	REF 1486	–
BL	REF 1485	–
	QuickMix syringe 8 g, mixing tips type 10	
A1	REF 1309	
A2	REF 1310	
A3	REF 1311	
B1	REF 1312	

Clinical Cases



Close-Up



Detailed view of wax-up



Close-ups of the temporary restoration with Structur 2

Source: Irfêo Saraiva de Camargo, Santo Agostinho / Brazil



Unsatisfactory aesthetic situation due to missing incisors, mesial inclination and the black triangle between the central incisors



Prepared and thereby axially corrected teeth



Treatment with temporaries made from Structur 2 SC. Visible aesthetic benefit provided already by the temporaries

Source: Dr. Wentaschek, Johannes Gutenberg-Universität Mainz / Germany

Structur Premium

Highly aesthetic composite material for the fabrication of provisional crowns and bridges



Indications

Fabrication of temporary crowns, bridges, inlays and onlays

Advantages

- Aesthetic like porcelain
- High stability of shape and shade
- Natural fluorescence
- Brilliant gloss
- As hard as enamel
- Extremely high fracture resistance
- Perfect handling
- Convenient work steps, easy to trim and polish
- Long-term use of temporary possible
- Very economical due to minimal material loss



REF 1719	Cartridge 5 × 75 g A3, accessories
REF 2158	Dispenser – type 2
REF 2185	Mixing tips type 6 for cartridge, 50 pcs.
	Cartridge 75 g, mixing tips type 6
Shade	
A1	REF 1712
A2	REF 1713
A3	REF 1714
A3.5	REF 1717
B1	REF 1718
BL	REF 1716

Temporary Set

Material for the fabrication of provisional dental prosthetic pieces, filling material for temporary restorations and temporary luting cement



Indications

More information on the indications can be found on the product pages of Structur 3, Provicol QM and Clip Flow

Advantages

- Provisional dental prosthetic pieces with a gloss that does not require polishing
- Light-curing temporary restoration material for inlay and onlay cavities, durable and saliva-proof
- Temporary, eugenol-free luting material
- Contains calcium hydroxide known for bacteriostatic effect

REF 2502 Structur 3 cartridge 50 ml A3, Provicol QM QuickMix syringe 5 ml, Clip Flow syringe 2 × 1.8 g

Not available in Canada

Provicol® QM Aesthetic

Translucent, temporary luting cement with calcium hydroxide, eugenol-free



Indications

Temporary luting of provisional or definitive inlays, onlays, crowns, partial crowns / veneers and bridges

Temporary filling of small one-surface cavities

Advantages

- Highly aesthetic, translucent appearance
- Accurate fit due to very low film thickness
- Optimum flowability for easy cementation
- Further advantages see Provicol QM Plus

SC self-curing	auto mix	temporary	contains Ca(OH) ₂
-------------------	-------------	-----------	---------------------------------

REF 1108	QuickMix syringe 5 ml, accessories
REF 1109	Set II QuickMix syringe 3 × 5 ml (1 × Provicol QM, 1 × Provicol QM Plus, 1 × Provicol QM Aesthetic), accessories
REF 2261	Dispenser – QuickMix
REF 2189	Mixing tips type 10, 50 pcs.

Clinical Case



Easy removal of excess material



Attractive result with ZrO₂ crowns

Source: Hamilton Renato Pereira Lima, Santos, São Paulo / Brazil

Provicol® QM Plus

Eugenol-free temporary luting cement with calcium hydroxide



Indications

Temporary luting of inlays, onlays, crowns, partial crowns and bridges

Temporary filling of small one-surface cavities

Advantages

- Increased strength for more retention and secure adhesion
- High level of radiopacity

- Semi-elastic properties for safe adhesion of the temporary
- Contains calcium hydroxide which is known to support the formation of tertiary dentine and to have an anti-microbial effect
- Eugenol-free, thus low allergy potential
- Ideal before adhesive luting with resin cements, because no inhibition of curing reaction of resin-based filling or luting materials

SC self-curing	auto mix	temporary	contains Ca(OH) ₂
-------------------	-------------	-----------	---------------------------------

REF 1098	QuickMix syringe 5 ml, accessories
REF 1099	Set QuickMix syringe 3 × 5 ml (2 × Provicol QM, 1 × Provicol QM Plus), accessories
REF 2261	Dispenser – QuickMix
REF 2189	Mixing tips type 10, 50 pcs.

Provicol® · Provicol® QM

Eugenol-free temporary luting cement with calcium hydroxide

Indications

Temporary luting of inlays, onlays, crowns, partial crowns and bridges

Temporary filling of small one-surface cavities

Advantages

- Semi-elastic properties for safe adhesion of the temporary
- Contains calcium hydroxide which is known to support the formation of tertiary dentine and to have an anti-microbial effect
- Ideal before adhesive luting with resin cements, because no inhibition of curing reaction of resin-based filling or luting materials



REF 1075	Tube 2 × 25 g (base / catalyst)
REF 1078	Tube 10 × 25 g (base / catalyst)
REF 1074	QuickMix syringe 5 ml, accessories
REF 2261	Dispenser – QuickMix
REF 2189	Mixing tips type 10, 50 pcs.
<i>REF 1075 and 1078 are not available in Canada</i>	

Provicol® C

Proven Provicol in cartridges

Indications

Temporary luting of inlays, onlays, crowns, partial crowns, bridges, attachments and posts

Temporary filling of small one-surface cavities

Advantages

- Semi-elastic properties for safe adhesion of the temporary
- Contains calcium hydroxide which is known to support the formation of tertiary dentine and to have an anti-microbial effect
- Eugenol-free, thus low allergy potential
- Ideal before adhesive luting with resin cements, because no inhibition of curing reaction of resin-based filling or luting materials



REF 1076	Cartridge 2 × 65 g, accessories
REF 2158	Dispenser – type 2
REF 2185	Mixing tips type 6, 50 pcs.

Bifix® Temp

Dual-curing, composite-based temporary luting material

Indications

Non-permanent luting of temporary restorations

Advantages

- Translucent, tooth-like shade for aesthetic restorations
- Dual-curing – flexible setting times by use of a polymerisation light
- Simple removal of excess material – can be removed in one piece following brief light-curing



REF 1055	QuickMix syringe 5 ml universal, accessories
REF 2261	Dispenser – QuickMix
REF 2188	Mixing tips type 9, 50 pcs.



Clip · Clip F

Light-curing filling material for temporary restorations



Indications

Temporary fillings
 Temporary sealing of cavities, especially in inlay / onlay technique

Advantages

- Easy to place – easy to remove in one piece
- No damage to preparation boundaries
- Time-saving through light-curing
- Durable and saliva-proof
- Specifically useful in inlay / onlay technique
- Clip F – additionally with fluoride



Clip	
REF 1284	Syringe 2 × 4 g
REF 1285	Syringe 3 × 4 g
REF 1287	Caps 25 × 0.25 g
REF 9301	Dispenser – Caps
Clip F (with fluoride)	
REF 1289	Syringe 2 × 4 g
REF 1283	Syringe 3 × 4 g
<i>Clip F is not available in Canada</i>	

Clinical Case



Abutment with open aperture Aperture sealed with Clip Flow Finished seal after light-curing

Source Dr. Marcelo Balsamo, São Paulo / Brasil

Clip Flow

Flowable, light-curing filling material for temporary restorations

Indications

Temporary inlay and onlay treatments of the cavity
 Sealing of openings for implant screws
 Relining material for temporary crowns and bridges
 Block out material for retentive areas in the dental arch, e.g. before taking impressions
 Covering of the gingival margin
 Fixing of resin matrix during filling placement
 Temporary filling of cavities and sealing of root canal orifices

Advantages

- Easy to place – easy to remove in one piece
- No damage to preparation boundaries
- Durable and saliva-proof
- Elastic, flowable and non-sticky
- Time-saving through light-curing



REF 1282	Syringe 2 × 1.8 g, accessories
REF 2148	Application cannulae type 46, 100 pcs.

CAD / CAM material

Luting

Core build-up

Temporaries

Denture relining

Impression

Repair

CAD / CAM material

Luting

Core build-up

Temporaries

Denture relining

Impression

Repair

Ufi Gel® hard C · Ufi Gel® hard

Hard direct denture relining



SC
self-curing

auto mix

Indications

Hard, permanent total or partial relinings to restore the functions of partial and total dentures

Lengthening of denture margins

Advantages

- Complete, hard relining chairside, in just one session
- Methyl methacrylate-free
- Neutral taste and odour
- No heat development in the mouth
- Good colour stability
- As easy as taking an impression
- Aesthetic, high patient acceptance and comfort
- Smooth surface
- New layers can be added at any time

Ufi Gel® hard C	
REF 2215	Set cartridge 80 g, adhesive bottle 10 ml, accessories
REF 2218	Set + dispenser cartridge 80 g, adhesive bottle 10 ml, accessories
REF 2216	Cartridge 80 g, accessories
REF 2217	Adhesive bottle 10 ml
REF 2158	Dispenser – type 2
REF 2187	Mixing tips type 8, 50 pcs.
Ufi Gel® hard	
REF 2210	Set powder 60 g, liquid bottle 40 ml, conditioner bottle 20 ml, accessories
<i>Ufi Gel hard is not available in Canada</i>	

Clinical Case



Ufi Gel® SC · Ufi Gel® P

Permanently soft, cold-curing relining material on silicone base



Indications

Permanently soft relining for total and partial dentures

- to eliminate pressure spots
- to dam the palatal vibrating line
- in cases of flabby ridges and / or insufficient adhesion
- to cushion sharp-edged alveolar processes
- to support the healing process in implantology

Advantages

- Top quality relining silicone
- Complete relining in one single session (chairside)
- Remains permanently soft
- Special adhesive for extreme bonding of silicone to denture
- Biocompatible (methacrylate-free)
- Neutral odour and taste
- Stable, aesthetic colour with chameleon effect
- Labside use: fewer steps than with other cold-cured materials
- For all PMMA based dentures
- Easy and fast application of direct and indirect relining
- Excellent adaptation to fine details for a precise fit of the denture
- Resistant against standard denture cleansers

Clinical Case



SEATING OF THE PROsthESIS AND MOVEMENTS OF THE MANDIBLE



SC
self-curing

auto mix

Ufi Gel® SC	
REF 2041	Set cartridge 50 ml, adhesive bottle 10 ml, glazing base 10 ml, glazing catalyst 10 ml, accessories
REF 2040	Cartridge 50 ml, accessories
REF 2029	Adhesive bottle 10 ml
REF 2047	Glazing bottle 2 x 10 ml (base / catalyst)
REF 2049	Polishing discs, 10 pcs.
REF 2158	Dispenser – type 2
REF 2187	Mixing tips type 8, 50 pcs.
Ufi Gel® P	
REF 2070	Set tube base 50 ml, catalyst 50 ml, glazing base 10 ml, glazing catalyst 10 ml, adhesive bottle 10 ml, accessories
REF 2071	Tube 2 x 50 ml (base / catalyst)
REF 2076	Adhesive bottle 10 ml
REF 2309	Disposable brushes for dental brush holder, 100 pcs.
REF 2315	Mixing palettes, 20 pcs.
REF 2338	Brush holder for VOCO disposable dental brushes and Micro Tim, 5 pcs.
<i>Ufi Gel P is not available in Canada</i>	

CAD / CAM material

Luting

Core build-up

Temporaries

Denture relining

Impression

Repair

V-Posil® Putty Fast · Putty Soft Fast · Heavy Soft Fast · Mono Fast

Precision impression material, VPS



Indications

V-Posil Putty Fast / Soft Fast is used as preliminary material for

- two-step putty-wash impression technique
- one-step putty-wash impression technique
- two-step putty-wash impression technique using a foil (plastic putty spacer)
- one-step putty impression technique for forming functional peripheries

V-Posil Heavy Soft Fast is to be used as heavy bodied material for

- one-step impression technique (simultaneous technique) using dual viscosities
- two-step impression technique using dual viscosities
- functional impressions

V-Posil Mono Fast is to be used as a medium bodied tray or syringeable impression material for

- taking impressions over fixed / removable restorations and implants (i.e., transferring impression posts and bridge components)
- functional impressions
- fabricating crown and bridgework or inlays
- fabricating full or partial dentures
- reline impressions
- transferring root posts when fabricating posts and cores indirectly
- multi tray technique
- use in the simultaneous mixing technique as well as the putty-wash technique

Advantages

- High precision – strongly hydrophilic addition-curing silicone for good wetting of oral structures
- Treatment comfort – long working time combined with a short intraoral setting time*
- Safe removal – high toughness allows removal without damaging filigree structures
- Perfect prosthetics – good hydrophilicity and high recovery after deformation of the set impression makes the pouring out and thus the restoration perfect

* V-Posil Putty Fast 380 ml: Extraoral working time ≤ 01:30 min., time in mounth ≥ 02:30 min.

Monophase impression



Double mixing impression



Correction impression



V-Posil Putty Fast

REF 2561	Jar 2 × 450 ml, accessories
REF 2562	Jar 8 × 450 ml, accessories
REF 2564	Cartridge 2 × 380 ml
REF 2203	Mixing tips type 30, 50 pcs.

V-Posil Putty Soft Fast

REF 2579	Jar 2 × 450 ml, accessories
----------	-----------------------------

V-Posil Heavy Soft Fast

REF 2565	Cartridge 380 ml, accessories
REF 2566	Cartridge 2 × 380 ml
REF 2567	Cartridge 2 × 50 ml, accessories
REF 2568	Cartridge 10 × 50 ml
REF 2196	Mixing tips type 16, 50 pcs.
REF 2203	Mixing tips type 30, 50 pcs.

V-Posil Mono Fast

REF 2569	Cartridge 380 ml, accessories
REF 2570	Cartridge 2 × 380 ml
REF 2571	Cartridge 2 × 50 ml, accessories
REF 2572	Cartridge 10 × 50 ml
REF 2196	Mixing tips type 16, 50 pcs.
REF 2203	Mixing tips type 30, 50 pcs.
REF 2133	Intraoral tips type 6, 50 pcs.

V-Posil® Light Fast · V-Posil® X-Light Fast

Precision impression material, VPS

Indications

V-Posil Light Fast and V-Posil X-Light Fast are to be used as syringeable impression materials for

- two-step putty-wash impression technique
- one-step putty-wash impression technique
- two-step impression technique using a foil (plastic putty spacer)
- one-step impression technique (simultaneous technique) using dual viscosities
- reline impressions
- fabricating full or partial dentures

Advantages

- High precision – strongly hydrophilic addition-curing silicone for good wetting of oral structures
- Treatment comfort – long working time combined with a short intraoral setting time
- Safe removal – high toughness allows removal without damaging filigree structures
- Perfect prosthetics – good hydrophilicity and high recovery after deformation of the set impression makes the pouring out and thus the restoration perfect

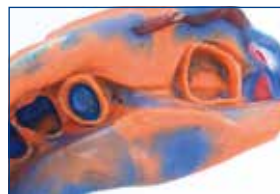
Clinical Case



Prepared teeth with retraction cord



Encasing the teeth in V-Posil Light Fast



Precise impression taking with V-Posil Putty Fast and V-Posil Light Fast



Finished denture on the model



Aesthetically natural result

Source: Dr. Walter Denner, Fulda / Germany



V-Posil Light Fast

- REF 2573 Cartridge 2 × 50 ml, accessories
- REF 2574 Cartridge 10 × 50 ml
- REF 2186 Mixing tips type 7, 50 pcs.
- REF 2141 Intraoral tips type 3, 50 pcs.

V-Posil X-Light Fast

- REF 2575 Cartridge 2 × 50 ml, accessories
- REF 2186 Mixing tips type 7, 50 pcs.
- REF 2141 Intraoral tips type 3, 50 pcs.

CAD / CAM material

Luting

Core build-up

Temporaries

Denture relining

Impression

Repair

Registrado® X-tra

Addition-curing silicone for bite registration, extra hard, fast setting



Indications

Occlusal bite registration
Fixing of face bow registrations
Location material for intraoral pin tracing templates

Advantages

- Optimised final hardness
- Allows application without time pressure
- Highly thixotropic qualities
- Good grinding properties
- Very precise impressions
- With economic mixing tips

SC
self-curing

auto
mix

Shore-A
90

REF 2035	Cartridge 2 × 50 ml, accessories
REF 2036	Cartridge 8 × 50 ml, accessories
REF 2158	Dispenser – type 2
REF 2196	Mixing tips type 16, 50 pcs.
REF 2140	Intraoral tips type 2, 50 pcs.

Application



Excellent surface affinity



No resistance on occlusion



The bite registration can be easily trimmed with a scalpel

Fit Test® C & B

Addition-curing silicone material for checking of prosthetic reconstructions



Indications

Control of precision of fit, marginal adaptation and marginal gaps of

- full or partial crowns as well as bridges
- inlays / onlays
- cast post abutments / post crowns
- metal denture bases
- implant-supported crowns and bridges
- attachments and other secondary parts of dentures

Advantages

- Fast diagnostic help for all restorative pieces
- QuickMix syringe for simple handling – automatic bubble-free mixing
- Direct application
- Optimal colour for metal and ceramic restorations
- Fast results due to short working and setting time

auto
mix

REF 2095	QuickMix syringe 5 ml, accessories
REF 2261	Dispenser – QuickMix
REF 2188	Mixing tips type 9, 50 pcs.
REF 2191	Mixing tips type 11, only with intraoral tips type 1, 50 pcs.
REF 2139	Intraoral tips type 1, 50 pcs.

VOCO Retraction Paste

Astringent paste for an effective temporary widening and dry gingival sulcus



Indications

For temporary retraction of the marginal gingiva to provide a dry gingival sulcus when the periodontium is healthy prior to, e. g.

- analogue or digital impressions
- cementation of temporary and permanent restorations
- preparation of class II and V fillings

Advantages

- **Thin cannula with flexible tip** – easy and pinpoint application into the sulcus
- **Viscosity Change** – paste consistency varies during application and sulcus widening
- **Good visibility** – contrasty to the gingiva
- **A clean product** – quick and easy to spray off

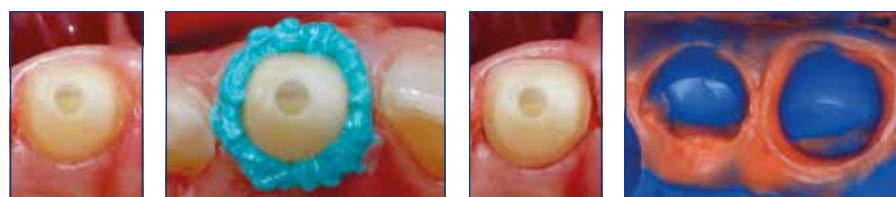


REF 1012	Caps 25 x 0.3 g
REF 1013	Caps 100 x 0.3 g
REF 9301	Dispenser – Caps

The paste is easy to apply and does reliably its job with regard to drying and expanding the sulcus. Even if you have a bleeding sulcus, you can make a great impression. VOCO Retraction Paste makes the impossible possible.

Dr. Bogdan Bratu, Rumänien

Application



Before Applied VOCO Retraction Paste After Precise impression with V-Posil

Source: Prof. Dr. Jürgen Manhart, Munich / Germany

Individo® Lux

Preformed individual impression trays, light-curing



3-5 min
light-curing

REF 2402	Maxillae 50 pcs. blue opaque
REF 2403	Mandibles 50 pcs. blue opaque
REF 2408	Maxillae 50 pcs. blue transparent
REF 2409	Mandibles 50 pcs. blue transparent

Indications

Fabrication of individual trays from contoured plates for maxillae and mandibles

Advantages

- In blue transparent or blue opaque colour
- Allows precise and economic processing
- Stable trays
- Pleasant mint flavour
- Non-sticky consistency
- Light-cured with standard halogen light or UVA lights

Profibase

Preformed transparent pink impression trays / base plates, light-curing



3-5 min
light-curing

REF 2111	Maxillae / mandibles 2 x 25 pcs.
REF 2112	Maxillae 50 pcs.
REF 2113	Mandibles 50 pcs.

Indications

Fabrication of gingiva shaded bases for wax models of complete and partial dentures

Fabrication of individual trays from contoured plates for maxillae and mandibles

Advantages

- Gingiva shade
- Simple and time-saving shaping by hand
- Permanent stability and compressive strength
- Pleasant mint flavour
- Non-sticky consistency
- Light-cured with standard halogen light or UVA lights

LC Dam

Light-curing gingival protection

Indications

Covers and protects the gingiva and neighbouring teeth during whitening therapy carried out in the dental surgery (in-office whitening)

Advantages

- A composite-based, blue coloured gingiva protection
- Covers the gingiva down to the interdental papillae optimally, without flowing away
- No painful heat build-up during light polymerisation
- No shifting during treatment, easy removal in one piece afterwards



REF 1655 Syringe 2 g, accessories
Not available in Canada

Cimara®

Material for ceramic repair with light-curing composite

ACID-FREE INTRAORAL
CERAMIC REPAIR

Indications

Intraoral repairs of defects in ceramic or composite veneer, fixed prosthetic work with metal frames

Advantages

- Acid-free ceramic repair in only one session
- No removal or re-cementation of restorative pieces
- Simple working steps
- No additional devices required
- Permanent bond of composite to porcelain
- High shear bonding strength



REF 1196 Set coupling silane 8 × 0.3 ml, adhesive bottle 4 ml, Opaquer LC syringe 1.2 g, GrandioSO Caps 8 × 0.25 g (A1, 2 × A2, 2 × A3, A3.5, B2, GA3.25), accessories

REF 1197 Coupling silane 4 × 0.3 ml, acc.

REF 1198 Adhesive bottle 4 ml

REF 1575 Opaquer LC syringe 1.2 g, acc.

REF 2147 Application cannulae type 45, 100 pcs.

REF 2309 Disposable brushes for dental brush holder, 100 pcs.

REF 2315 Mixing palettes, 20 pcs.

REF 2338 Brush holder for VOCO disposable dental brushes and Micro Tim, 5 pcs.

Not available in Canada

CAD / CAM material

Luting

Core build-up

Temporaries

Denture relining

Impression

Repair



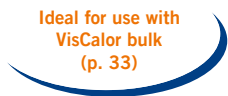
Devices · Various

Advancement. Efficacy. Practice-orientation.

But also, nothing really functions in the practice without those practical little helpers – be it application cannulae in different sizes, large or small devices for application of or subsequent working with products, as well as cleaning preparations or material for blocking out.

VisCalor® Dispenser

Preheating dispenser for composite Caps



Indications

Warming and application of highly filled composites in Caps

Advantages

- Effective handling – rapid warming and immediate application in one device
- Homogeneous warming thanks to near-infrared technology
- Two programs (VisCalor bulk and additional VOCO composites)
- Handy design and ideal shape for reaching molar cavities
- Better adaptation of composites to cavity walls thanks to silkier consistency

REF 9143	Preheating device
REF 9144	Changeable tops 2 pcs.
REF 9145	Protective foils 100 pcs.

Caps Warmer

Preheating device for composite Caps



Indications

Device for warming composite Caps

Advantages

- Allows brief warming of composite Caps
- The specially designed tray optimally encloses VOCO composite Caps, which ensures that they are warmed uniformly
- Increasing flowability and adjusting the handling properties of the composite
- Simultaneous warming of one dispenser with Cap and up to four individual Caps – also ideal for working with several shades
- Choice of 3 temperature settings – depending on the clinical situation and the required consistency

REF 9001	Preheating device
----------	-------------------

Celalux® 3

High-Power LED curing-light

Devices

Indications

Curing of all light-curing dental materials whose polymerisation is activated within a wavelength range of 450 - 480 nm

Others

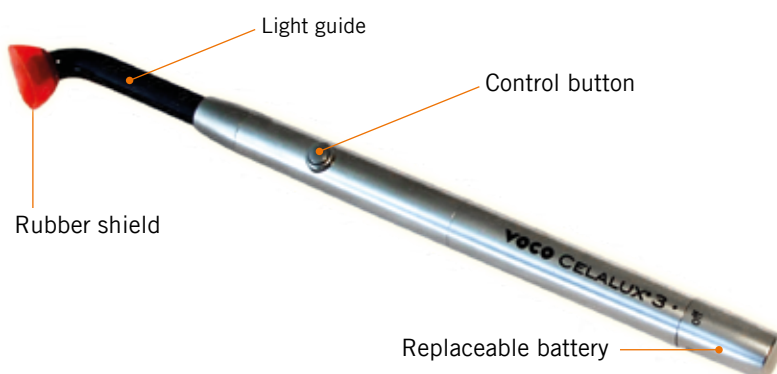
Advantages

- State-of-the-art LED technology with high light intensity (approx. 1,300 mW / cm²)
- Wavelength range 450 - 480 nm
- Slim and ergonomic design (pen-shaped); weight of the handpiece, including device base and light guide, weighs only 70 g
- Indicates how much time has elapsed by vibrating at the start, and again after 10 s and 20 s, instead of the acoustic signals previously used
- Easy to handle, cordless
- Autoclavable 8 mm light guide
- The spare device base supplied ensures the device is always ready for use
- Battery is very easy to change

Cleaning

Small devices

Disposable articles



Application



REF 9090 Celalux 3 (handpiece, battery charger, power cord with interchangeable mains adapters, 2 Device Bases, 8 mm light guide, rubber shield, operating instructions)

Accessories

REF 9091 Light guide 8 mm, autoclavable
REF 9092 Device Base
REF 9093 Rubber shield, 5 pcs.

Technical data

Wave length range	450 - 480 nm
Output	1,300 mW / cm ²
Handling	Intermittent use, 10 cycles, each of 20 s duration / 3 min. break
Operating time with fully charged battery	> 45 cycles, each of 20 s duration
Light guide	ø 8 mm
Device Base	Lithium polymer, 270 mAh

Handpiece

Dimensions	ø 12.6 mm, L 210 mm
Weight	70 g (incl. device base and light guide)

Battery charger

Dimensions	L 160 mm × B 90 mm × H 35 mm
Weight	170 g
Radiometer	built-in, Green light: sufficient light output Red light: insufficient light output
Mains voltage	100 - 240 V AC, 50 / 60 Hz
Power supply	6 V DC / 1 A
Classification	Type BF
Electrical insulation	Class II
Connector	interchangeable adapter for DE, UK, USA (supplied)

VOCO GIC Mixer®

Capsule mixing device especially for glass ionomer cements

Indications

Device for mixing powder and liquid in application capsules

Advantages

- High oscillating frequency of 4,600 rpm, creating a particularly homogeneous mixture of powder and liquid
- Modern design
- Capsule holder allows simple insertion and removal of capsules
- User-friendly
- Quiet and practically vibration-free
- Mixing times can be freely selected between 1 and 99 seconds



REF 9050 Capsule mixing device

VOCO Dynamic Dispenser

Dynamic mixing device

Indications

Device for the automatic dispensing and mixing of VOCO impression materials in the 5:1 cartridge

Advantages

- Homogeneous, dynamic mixing of product components to ensure a consistently high material quality
- Bubble-free dispensing
- Fill level display
- 2 feed speeds
- Electronic residue detection



REF 9140 Mixing device 230 V
Not available in Canada

Caries Marker

Coloured solution for disclosing caries infections

Indications

Dyeing of carious dentine to simplify cavity preparation and for demonstration purposes

Advantages

- Precise distinction between carious and healthy dentine
- Supports minimally invasive restoration techniques
- Suited for training and teaching purposes on extracted teeth



REF 1005 Bottle 2 × 3 ml
REF 2252 Pele Tim, No. 1, 3.000 × ø 4 mm
Not available in Canada

Block Out Gel LC

Light-curing block out material

Indications

Blocking out of plaster models

Advantages

- Blue colour for simple application control
- Easy application directly from the syringe



10-30
sec
light-curing

REF 1661 Syringe 4 × 1.2 ml, accessories
REF 2144 Application cannulae type 44,
100 pcs.
Not available in Canada

Pele Tim

Foam pellets for application of liquid or paste preparations without pressure

Indications

Touching of infected alveoli

Endodrain

Vitality test

Removal of material excess from cementation or sealing

Simple application, e.g. of fluoride preparations

Advantages

- 5 practical sizes
- Painless application without pressure
- Economical application
- Hygienic application without fluff



REF 2250 No. 0 3.000 × ø 3 mm
REF 2252 No. 1 3.000 × ø 4 mm
REF 2253 No. 2 1.000 × ø 5 mm
REF 2254 No. 3 500 × ø 8 mm
REF 2255 No. 4 500 × 6 × 8 mm
Not available in Canada

Traypurol®

Concentrated cleaning agent for impression trays and instruments



Indications

Self-acting cleaning of impression trays and instruments

Advantages

- Simply diluted in water
- Removes residues of alginates, zinc oxide eugenol, glass ionomer, carboxylate and phosphate cements
- Cleans trays and instruments reliably overnight
- Can be used in ultrasonic devices
- Suited also for non-oxidising metals and plastic
- Biodegradable and gentle

REF 2289 Bottle 1 l
REF 2290 Canister 5 l
REF 2304 Dispenser pump – canister 5 l
Not available in Canada

Traypurol® tabs

Active-tabs for cleaning impression trays and instruments



Indications

Self-acting cleaning of impression trays and instruments

Advantages

- Removes alginates and cements within a short amount of time
- Especially easy to dose
- No vigorous stirring necessary – the tabs automatically dissolve when placed in water
- Gentle to material – suitable for all rustproof metals (including aluminium) and plastics
- Bio-degradable and pH-neutral
- Can be used in ultrasonic baths

REF 2355 50 pcs.

Caps Dispenser

Direct application dispenser for dispensing restorative materials in Caps



REF 9301 Dispenser – Caps

Dispenser type 2

Dispenser to extrude dental materials from cartridges



For 1:1 or 1:2 cartridges (50 ml)

REF 2158 Dispenser – type 2

Dispenser type 3

Dispenser to extrude dental materials from cartridges



For 1:1 or 1:2 cartridges (25 ml)

REF 2259 Dispenser – type 3

QuickMix Dispenser

Dispenser to extrude dental materials from QuickMix syringes



For 1:1 QuickMix syringes

REF 2261 Dispenser – QuickMix

AC Applicator type 1

Applicator for the direct administration of glass ionomer cement restorative and luting materials in application capsules (AC)



REF 2331 Applicator – AC type 1

AC Applicator type 2

Applicator for the direct administration of glass ionomer cement restorative and luting materials in application capsules (AC)



REF 2334 Applicator – AC type 2

AC Activator

Device to activate VOCO application capsules (AC)



REF 9300 Activator – AC







Application brush dispenser

Dispenser for hygienic removal of application brushes – can be repeatedly refilled with two types of brushes



REF 2244 Dispenser – application brushes

Mixing tips					
REF 2185	Mixing tips type 6 for Provicol C, Structur Premium, Structur 2 in cartridge, Structur 3 in cartridge, 50 pcs.		REF 2194	Mixing tips type 14 for Bifix SE, Perfect Bleach Office+, 50 pcs.	
REF 2186	Mixing tips type 7 for V-Posil Light Fast, V-Posil X-Light Fast, 50 pcs.		REF 2195	Mixing tips type 15 (with intraoral tips type 1) for Bifix SE, Perfect Bleach Office+, 50 pcs.	
REF 2187	Mixing tips type 8 for Ufi Gel hard C, Ufi Gel SC, 50 pcs.		REF 2196	Mixing tips type 16 (for intraoral tips type 2) for Registrado Clear, Registrado X-tra, V-Posil Heavy Soft Fast in cartridge, V-Posil Mono Fast in cartridge, 50 pcs.	
REF 2188	Mixing tips type 9 for Bifix Temp, Bifix Hybrid Abutment, Fit Test C & B, 50 pcs.		REF 2199	Mixing tips type 19 for Rebilda DC in cartridge, bendable, 30 pcs.	
REF 2189	Mixing tips type 10 for Meron Plus QM, Provicol QM, Provicol QM Aesthetic, Provicol QM Plus, Quick Up, Structur 2 in the QuickMix syringe, Structur 3 in the QuickMix syringe, 50 pcs.		REF 2202	Mixing tips type 20 for die silicone, CediTEC, 50 pcs.	
REF 2191	Mixing tips type 11 for Bifix Hybrid Abutment, Bifix QM, Fit Test C & B only with intraoral tips type 1, Grandio Core Dual Cure in the QuickMix syringe, Rebilda DC in the QuickMix syringe, 50 pcs.		REF 2203	Mixing tips type 30 for V-Posil Heavy Soft Fast in large cartridge, V-Posil Mono Fast in large cartridge, V-Posil Putty Fast in large cartridge, 50 pcs.	
REF 2192	Mixing tips type 12 for Rebilda DC in cartridge, 50 pcs.				

Application aids					
REF 2249	Micro Tim, fine application brushes, 100 pcs.		REF 2247	Single Tim, application brushes, 100 pcs.	
REF 2309	Disposable brushes for dental brush holder, 100 pcs.		REF 2246	Endo Tim, application brushes, to be used in the root canal, 50 pcs.	
REF 2338	Brush holder for VOCO disposable dental brushes and Micro Tim, 5 pcs.		REF 2245	Easy Brush, application brushes, 50 pcs. <i>Not available in Canada</i>	

Devices

Others

Cleaning

Small devices

Disposable articles

Devices

Others

Cleaning

Small devices

Disposable articles

Application cannulae					
REF 2145	Application cannulae type 40 for Fissurit F / FX, 100 pcs.		REF 2147	Application cannulae type 45 for Amaris Gingiva, Cimara Opaquer LC, FinalTouch, GrandioSO Light Flow, Grandio Seal, 100 pcs.	
REF 2146	Application cannulae type 41 for Admira Fusion Flow, Bifix Hybrid Abutment, Calcimol LC, Grandio / SO Flow, Ionoseal, LC Dam, 100 pcs.		REF 2148	Application cannulae type 46 for Admira Fusion x-base, AlignerFlow LC, Clip Flow, GrandioSO Heavy Flow, x-tra base, 100 pcs.	
REF 2310	Application cannulae type 42 for Vococid, 30 pcs.		REF 2131	Application cannulae type 47 for Calcicur, 30 pcs.	
REF 2167	Application cannulae type 43 for VOCO Profluorid Varnish cartridge, 100 pcs.		REF 2132	Application cannulae type 48 for Vococid, 50 pcs.	
REF 2144	Application cannulae type 44 for Admira Flow, AlignerFlow LC, Amaris Flow, Arabesk Flow, Block Out Gel LC, GrandioSO Light Flow, Quick Up LC, Twinky Star Flow, 100 pcs.				

Intraoral tips					
REF 2133	Intraoral tips type 6 for V-Posil Mono Fast, 50 pcs.		REF 2141	Intraoral tips type 3 for Rebilda DC in cartridge, V-Posil Light Fast, V-Posil X-Light Fast, 50 pcs.	
REF 2139	Intraoral tips type 1 for Bifix Hybrid Abutment, Bifix QM, Bifix SE, Perfect Bleach Office+, to be used in the root canal with Rebilda DC in the QuickMix syringe, 50 pcs.		REF 2142	Intraoral tips type 4 for Bifix Hybrid Abutment, Bifix QM, Grandio Core Dual Cure in the QuickMix syringe, Rebilda DC in the QuickMix syringe, 50 pcs.	
REF 2140	Intraoral tips type 2 for Registrado Clear, Registrado X-tra, 50 pcs.				

Mixing spatulas · Mixing pads · Mixing palettes					
REF 2303	Mixing pads 70 × 80 mm, with adhesive back, 4 pcs.		REF 2315	Mixing palettes, 20 pcs.	

- A**
- AC Activator88
 - AC Applicator88
 - Admira Bond22
 - Admira Fusion 524
 - Admira Fusion25
 - Admira Fusion Flow26
 - Admira Fusion x-base28
 - Admira Fusion x-tra27
 - Admira Protect13
 - Alfacomp LC40
 - AlignerFlow LC40
 - Amaris36
 - Amaris Flow36
 - Amaris Gingiva37
 - Application brush dispenser 88
 - Aqua Ionofil Plus47
 - Aqua Meron62
- B**
- Bifix Hybrid Abutment60
 - Bifix QM60
 - Bifix SE59
 - Bifix Temp72
 - Bifluorid 1010
 - Block Out Gel LC86
 - BrackFix63
- C**
- Calcicur16
 - Calcimol LC16
 - Caps Dispenser88
 - Caps Warmer83
 - Caries Marker86
 - CediTEC56
 - CediTEC DB57
 - CediTEC DT56
 - Celalux 384
 - Ceramic Bond61
 - Cimara81
 - CleanJoy7
 - Clip73
 - Clip F73
 - Clip Flow73
- D**
- Dispenser88
 - Disposable articles89
 - Dynamic Dispenser85
- E**
- Easy Glaze47
- F**
- FinalTouch37
 - Fissurit F9
- G**
- GIC Mixer85
 - Grandio34
 - Grandio blocs54
 - Grandio Core Dual Cure67
 - Grandio disc55
 - Grandio Flow35
 - Grandio Seal8
 - GrandioSO29
 - GrandioSO Flow30
 - GrandioSO Heavy Flow31
 - GrandioSO Light Flow30
 - GrandioSO x-tra32
 - GrandTEC32
- H**
- Individuo Lux80
- I**
- Ionofil Molar46
 - Ionofil Molar AC Quick46
 - Ionolux43
 - Ionoseal17
 - IonoStar Molar45
 - IonoStar Plus44
- L**
- LC Dam81
- M**
- Meron62
 - Meron (Application capsule) .62
 - Meron Plus QM61
- N**
- Pele Tim86
- O**
- Perfect Bleach14
 - Perfect Bleach Office+14
 - Polofil Supra41
 - Profibase80
 - Profluorid Varnish12
 - Prophylaxe Set11
 - Provicol72
 - Provicol C72
 - Provicol QM72
 - Provicol QM Aesthetic71
 - Provicol QM Plus71
- P**
- Rebilda DC66
 - Rebilda Post64
 - Rebilda Post GT65
 - Registrado X-tra78
 - Remin Pro11
 - Retraction Paste79
- R**
- Solobond M22
 - Structur 269
 - Structur 368
 - Structur CAD53
 - Structur Premium70
- S**
- Temporary Set70
 - Traypuro87
 - Traypuro tabs87
 - Twinky Star41
 - Twinky Star Flow41
- T**
- Ufi Gel hard74
 - Ufi Gel hard C74
 - Ufi Gel P75
 - Ufi Gel SC75
- U**
- VisCalor bulk33
 - VisCalor Dispenser83
 - V-Posil Heavy Soft Fast76
 - V-Posil Light Fast77
 - V-Posil Mono Fast76
 - V-Posil Putty Fast76
 - V-Posil Putty Soft Fast76
 - V-Posil X-Light Fast77
 - V-Print cast51
 - V-Print c&b temp52
 - V-Print dentbase52
 - V-Print model 2.050
 - V-Print model fast50
 - V-Print SG50
 - V-Print splint49
 - V-Print splint comfort49
 - V-Print tray51
 - V-Print Try-In51
 - Vococid21
 - VOCO Dynamic Dispenser . .85
 - VOCO GIC Mixer85
 - VOCO Ionofil Molar46
 - VOCO Ionofil Molar AC Quick46
 - VOCO Profluorid Varnish . . .12
 - VOCO Retraction Paste . . .79
- V**
- x-tra base38
 - x-tra fil39
- X**



VOCO GmbH
Anton-Flettner-Straße 1-3
27472 Cuxhaven
Germany

Freecall: 00 800 44 444 555
Fax: +49 (0)4721-719-140

info@voco.com
www.voco.dental